

MariSys

Aqua One®

240 *Series II*

Advance
Technically Superior



SUITABLE
for up to
240L
Aquarium

SUITABLE
MARINE

4
YEAR
GUARANTEE

Instruction Manual

Important Safeguards

This appliance is not intended for use by persons (including children) with reduced physical, sensory or mental capabilities, or lack of experience and knowledge, unless they have been given supervision or instruction concerning use of the appliance by a person responsible for their safety.

Children should be supervised to ensure that they do not play with the appliance.

Warning: To guard against injury, basic safety precautions should be observed, including the following:

1. Read and follow all safety instructions before using this appliance.

2. Danger: To avoid possible electric shocks, special care should be taken since water is employed in the use of aquarium equipment. For each of the following situations do not attempt repairs yourself. Return the appliance to an authorised service facility for service or discard the appliance.

a) If the electrical components of the appliance get wet, immediately unplug the appliance from the power source (non immersable equipment only).

b) If the filter shows any sign of abnormal water leakage, immediately unplug it from the power source.

c) Carefully examine the filter after installation. It should not be plugged in when there is water on parts which are not intended to be wet.

d) Do not operate any aquarium electrical appliance if they have a damaged cord or plug, or if they are malfunctioning, or dropped or damaged in any manner.

A "drip loop" (See the diagram) should be arranged by the user for each cord connecting the electrical appliances in the aquarium to a receptacle. The drip loop is the part of the cord below the level of the receptacle. It is used to prevent water traveling along the cord and coming in contact with the receptacle.

If the plug or receptacle does get wet, do not unplug the appliance. Disconnect the fuse or circuit breaker that supplies the power to the appliance, then unplug and examine for presence of water in the receptacle.

3. Close supervision is necessary when the appliance is used by or near children.

4. Always unplug all electrical appliances in the aquarium from the electrical outlet, when not in use, before putting on or taking off parts, before any type of maintenance, or cleaning. Never yank the cord to pull it from the outlet. Grasp the plug and unplug to disconnect.

5. Do not use the filter for reasons other than the intended use. The use of attachments that are not recommended or sold by the filter manufacturer may cause the product to be unsafe. This is not recommended.

6. Do not install or store the pumps where they will be exposed to weather or temperatures below freezing.

7. Make sure any component mounted on the aquarium is securely installed before operating it.

8. Read and observe all the important notices on the filter.

9. Ensure input voltage is the same voltage as your local power supply.

10. Ensure your hand is dry when turning the power switch on/off and when inserting/removing the power cord from the receptacle.

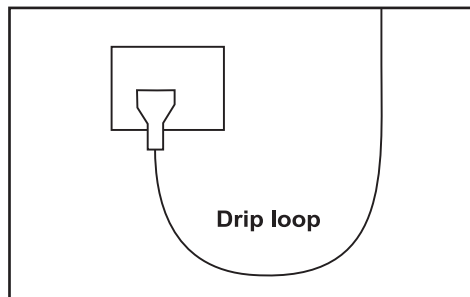
11. If you are in any doubt about the electrical installation or safety of this product you must consult a qualified electrician.

12. These pumps are for indoor use only.

a) Do not use the filter in water above 35°C.

b) Always disconnect from electrical outlet before cleaning, maintenance or handling the pump.

c) To protect against the risk of electrical shock, do not immerse the plug of the pumps in water or other liquid.



For Guarantee Conditions, please refer to the Guarantee section on page 13 of this booklet.



Warning:

This appliance must not be disposed of together with domestic waste. It must be disposed of at an authorised centre set up for the recycling of electrical and electronic appliances. By collecting and recycling waste, you help save our natural resources. Please Make sure this product is disposed of in an environmentally friendly and safe way.

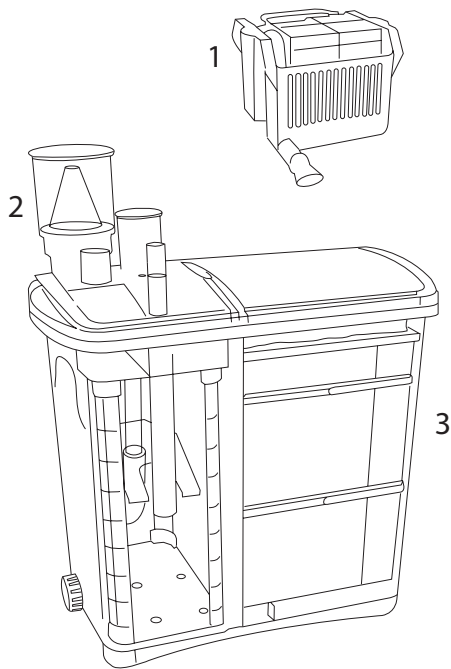
Before First Use / Preparation

Read and follow all the instructions, even if you feel you are familiar with the product and find a place to keep the instructions handy for future reference. Your attention is drawn particularly to the sections concerning "IMPORTANT SAFEGUARDS" and the "AQUA ONE GUARANTEE". Please ensure you retain your original purchase receipt in the event that guarantee service is required.

Carefully unpack the MariSys making sure you keep all the packing material until all the parts of the product have been found and the product has been assembled.

This product is shipped to you in a factory sealed carton. Should the product malfunction in any way or the unit is damaged and requires replacement, contact the retailer where the product was purchased for inspection.

Know Your Filter

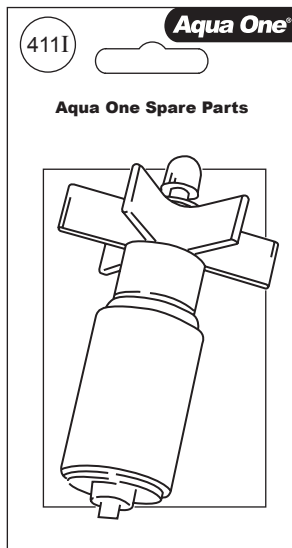


- 1. Overflow Box
- 2. Protein Skimmer
- 3. MariSys

Replacement Parts & Filter Media

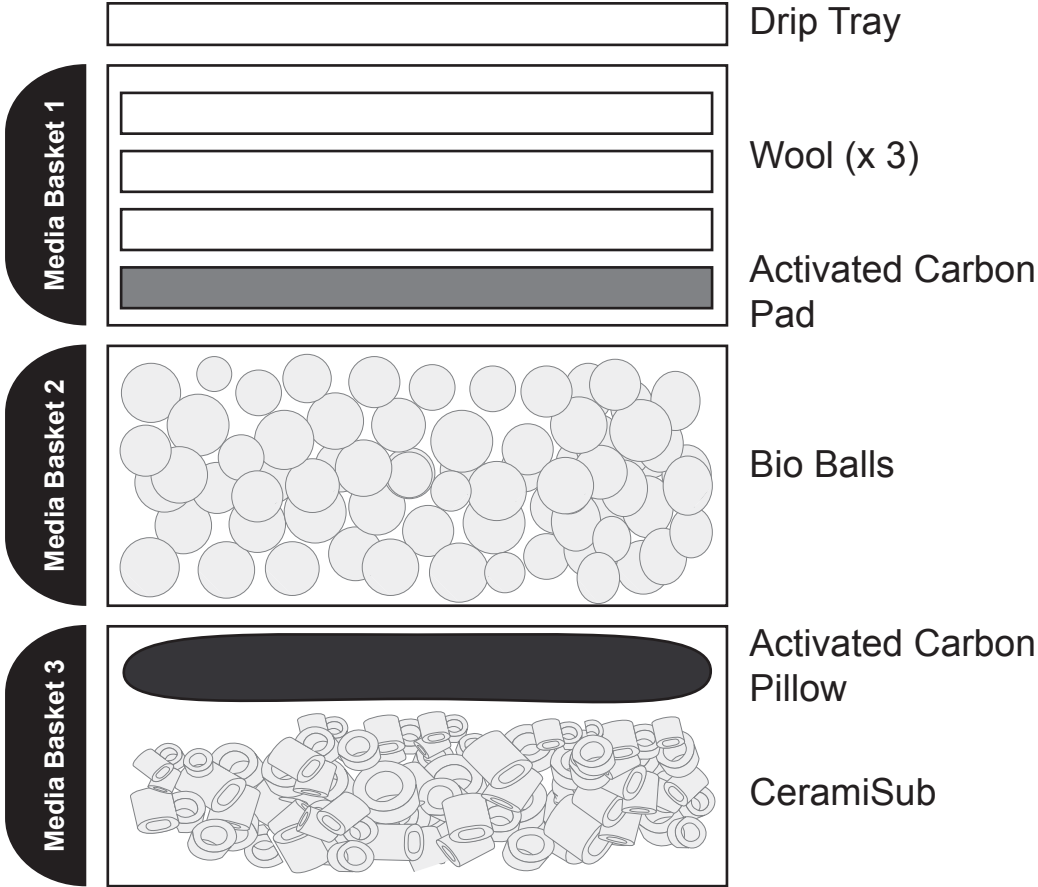
Use Aqua One Genuine Spare Parts Only. See your local Aqua One Dealer and look for the number listed below for the spare part you require. Alternatively you will find these numbers on the silver label located on the product.

Return Pump Impeller	411I
Protein Skimmer Impeller	412I
3 x Wool Pack	411W
2 x Activated Carbon Pad	411C
2 x Activated Carbon Pillow	412C



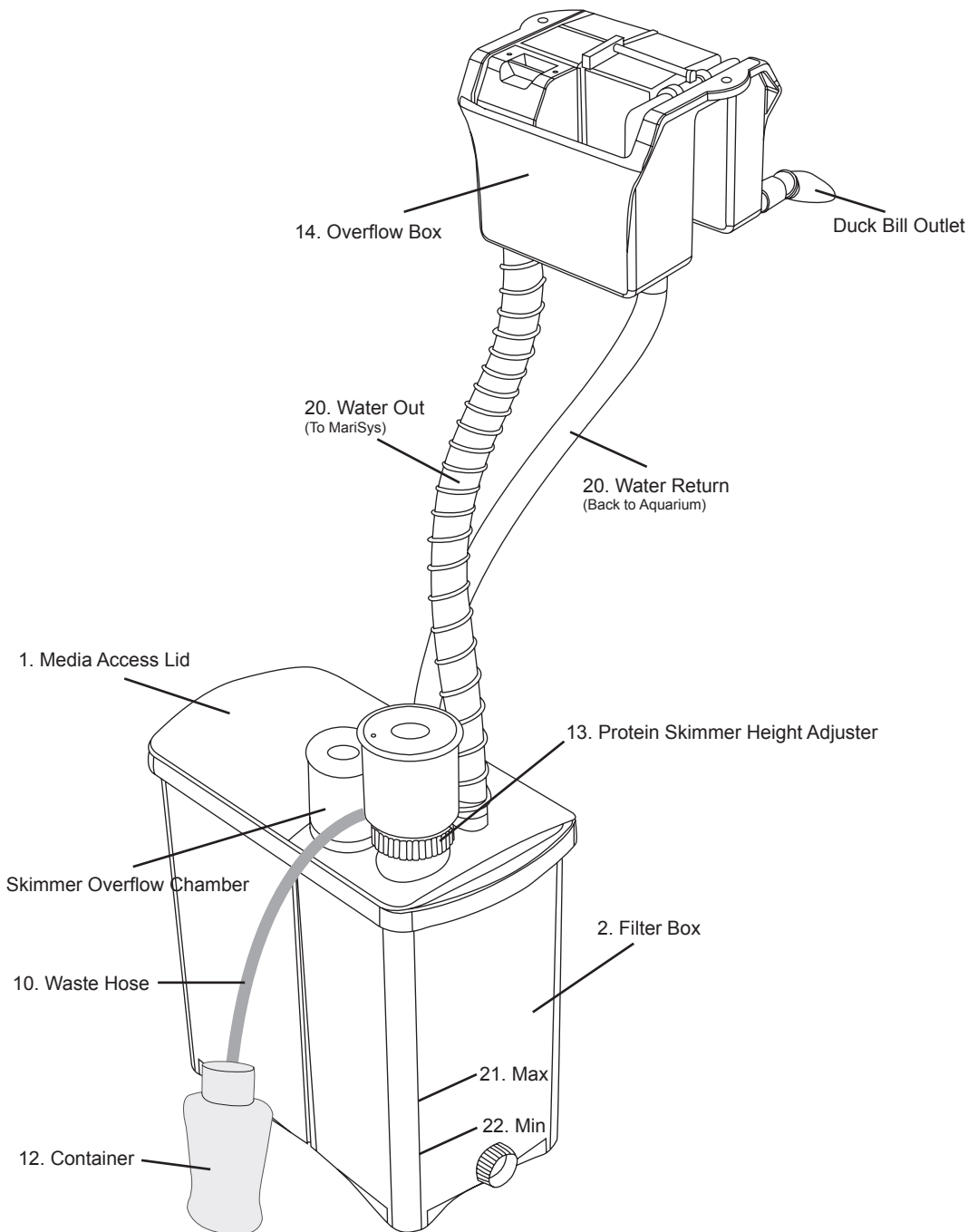
Recommended Filter Media Set Up

MariSys

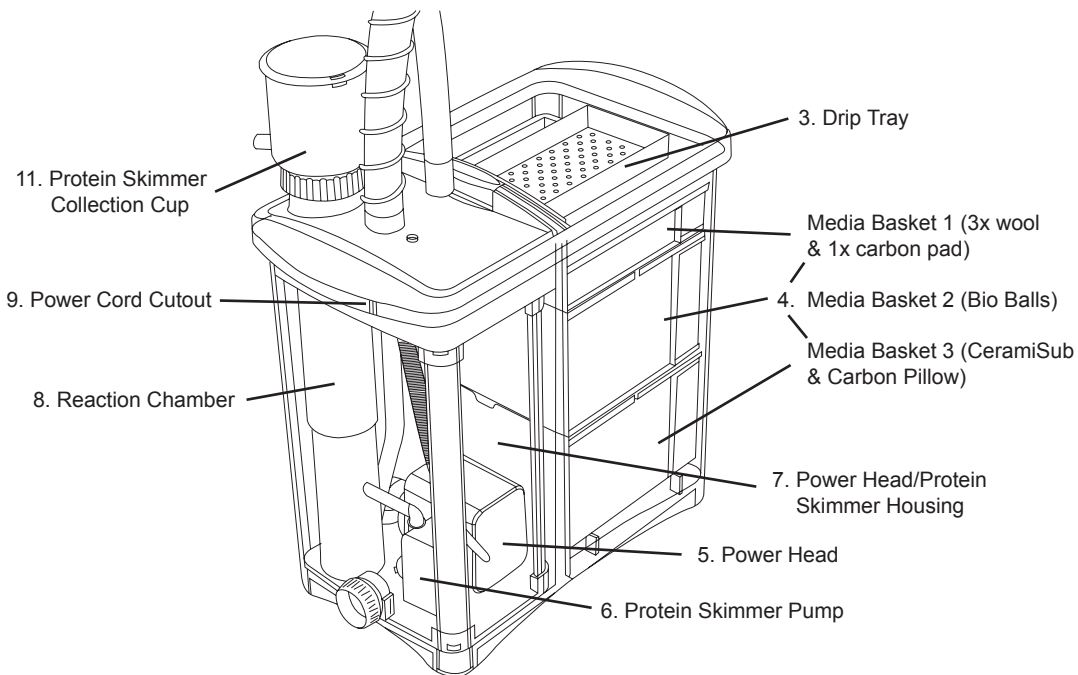


Please Note: This filter media set up above is a guide. For more information regarding filter media please consult your Aqua One specialist.

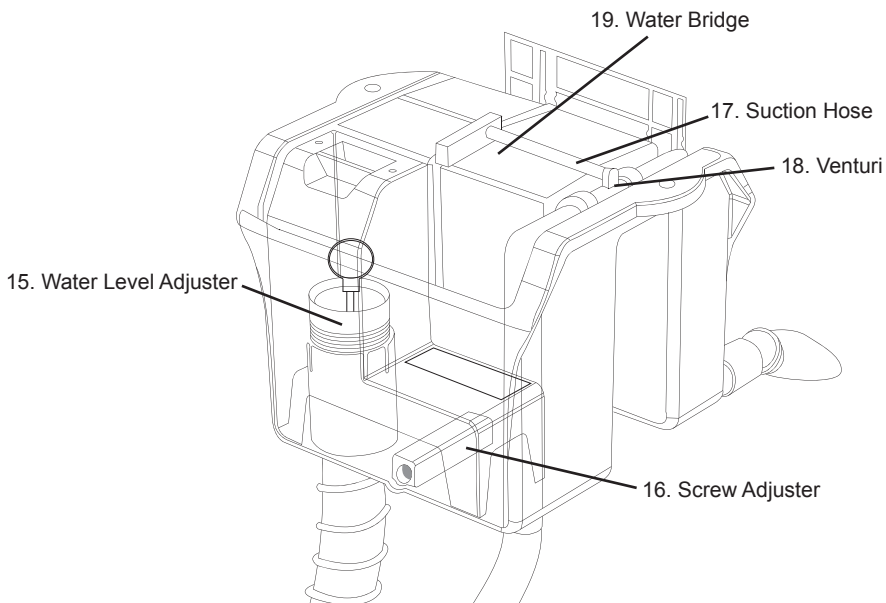
MariSys Complete System (Diagram 1)



MariSys (Diagram 2)



Overflow Box (Diagram 3)



Set Up Instructions

Setting up the Filter Media

For the following section refer to Diagrams 1 & 2 on pages 3,5 & 6 of this instruction booklet.

Locate and organise all parts before assembly. Familiarise yourself with the parts and where they fit. (Refer to the Quick Set Up Guide and Exploded View sheet) The only tools you will need to assemble your MariSys Filter are a flathead screwdriver, a utility knife and a tape measure.

1. Remove the Media Access Lid (1) from the top of the Filter Box (2), lift and remove the Drip Tray (3).
2. Lift the handles and remove all of the Media Baskets (4) from the Filter Box and take them to the sink.
3. Ensure there is no soap or any other residue around the sink area.
4. Remove the Carbon Pillow and CeramiSub from the plastic bag, rinse them along with all of the other filter media under tap water.
5. Refer to the diagram on page 4 for the correct placement of the media and the order in which they should be placed in the Filter Box.
6. Return the Media Baskets to the Filter Box.
7. Do not replace the Drip Tray or Media Access Lid yet.

Setting up the Power Head and Protein skimmer

For the following section refer to Diagrams 1 & 2 on pages 5 & 6 of this instruction booklet.

1. Remove the Power Head (5) & Protein Skimmer Pump (6) from the box marked PUMP.
2. Check the Intake Elbow on the Power Head is firmly inserted and facing downwards.
3. Ensure your hand is dry and plug both pumps in to ensure they are working. DO NOT stick fingers or other objects into a pump if it does not work. Refer to the Maintenance section of this booklet for instruction on disassembling the unit.

4. Remove the Power Head / Protein Skimmer Housing (7) from the Filter Box.

Please Note: This may be a tight fit.

5. Connect the Flexible Tubing to the Outlet of the Power Head. Ensure it is connected correctly.
6. Insert both pumps into the Housing. You will notice there are 8 holes where the rubber feet on the pumps are intended to sit. The Protein Skimmer Pump will need to be connected to the small elbow on the side of the protein skimmer's Reaction Chamber (8).
7. Feed the Power Cords through the Housing. You will notice the Power Cord Cutout (9) on the side of the lip of the filter box.
8. At the top of the housing there is a black O-ring. Lubricate this with an aquarium safe lubricant. This will improve the seal and allow the Housing to be removed easier when maintenance is required.
9. Slide the Power Head / Protein Skimmer Housing back into the Filter Box. Be sure the Power Cord from the Power Head is feed through the Power Cord Cutout.
10. DO NOT FORCE the unit together. If it feels tight lift the Housing back out and try again.
11. Place the Drip Tray back ontop of the Media Baskets and refit the Media Access Lid.
12. Connect the Waste Hose (10) to the outlet at the base of the Protein Skimmer Collection Cup (11), then place the other end of the tubing into an empty 1 litre Container (12) (Not supplied).
13. When the aquarium is newly set up, it may take a couple of days for the Protein Skimmer to begin producing waste. Once the Skimmer is functioning properly, check the settings of the Protein Skimmer daily by viewing the amount of bubbles in the Reaction Chamber.
14. To adjust and fine tune the Protein Skimmer, loosen the Height Adjuster (13) located at the base of the Collection Cup anti clock-wise until it is free. Pull the Collection Cup up.

There is a thin O-ring found directly under the Height Adjuster. Roll the O-ring up or down depending on the need of adjustment.

Maintenance

To ensure optimum filter performance, routine maintenance should be performed monthly or less depending on size of tank, amount of fish and number of daily feeding. If the filter and media are neglected, the filter media will become clogged and unable to collect waste material. This can affect aquarium water quality and possibly the health of the tank inhabitants. Grimy waste can also damage the Power Head, Protein Skimmer Pump and also diminish the filter efficiency.

Please Note: It is best to turn the system off whenever any maintenance is performed on the MariSys or Overflow Box.

Do not use soap or detergents that can harm the tank inhabitants.

The Filter Wool should be changed or rinsed every two to three weeks or as needed. The Activated Carbon Pad should be replaced monthly when there is a normal bio-load.

Replacing Filter Media

1. Remove the Media Access Lid and Drip Tray.
2. Remove the Media Basket containing the Filter Wool and Carbon Pad. Hold the Media Access Lid under the Media Basket to keep the water from splashing on the floor while transporting it to the sink.
3. Take the Media Basket to the sink and remove all of the Filter Wool Pads and the Carbon Pad.
4. Rinse the Media Baskets under cool running water.
5. Place the new Carbon Pad at the bottom of the Media Basket followed by the rinsed or new Wool Pads.
6. Replace the Carbon Pillow every four weeks or less, depending on number of aquatic animals, discoloration or cloudy water and the amount of daily feeding.
7. The Bio Balls and CeramiSub should not be washed under tap water at any stage. They can be dunked in a bucket of aquarium water if they are extremely dirty. Replace 1/3rd of the CeramiSub every 12 months as the media can clog and stop working effectively.

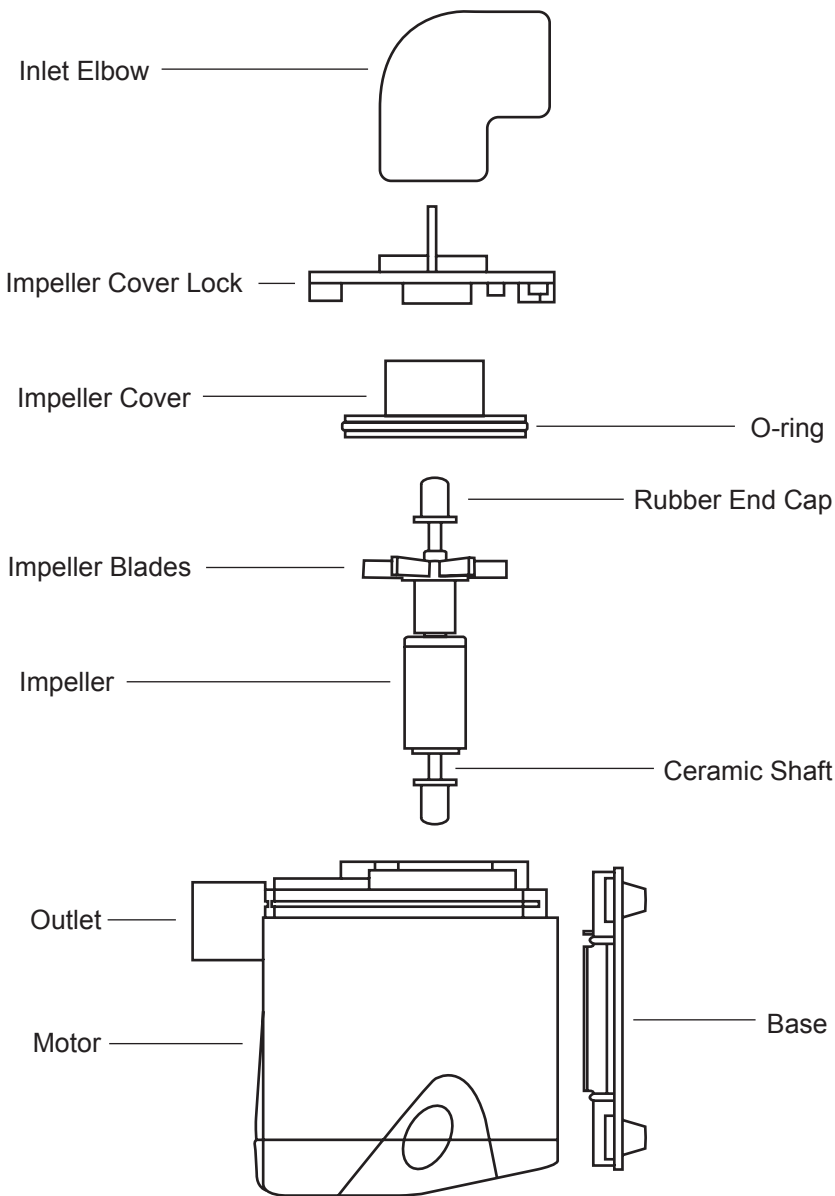
Consult your Aqua One specialist for further advice on maintaining your biological media.

Power Head & Protein Skimmer Pump Maintenance

These pumps should be disassembled and cleaned on a monthly basis. Refer to the Diagram on page 10 for the following instructions.

1. Turn off all power and unplug the pumps before servicing them.
2. Remove the Media Access Lid.
3. Take hold of the Power Head / Protein Skimmer Housing and pull gently upward to expose the pumps for servicing.
4. Hold the Power Head and remove the Inlet Elbow.
5. Gently turn the Impeller Cover Lock anti-clock wise to remove it.
6. Pull the Impeller Cover away from the Motor. This will be a tight fit.
5. Clasp the Impeller Blades with needle nose pliers and slowly pull the Impeller from the Impeller Chamber.
6. Clean Impeller under warm running water. Do not use soap or detergent. Remove the Rubber End Caps and Ceramic Shaft and run clean water through the hole in the center of the Impeller.
7. Use an Aqua One Double Ended Pipe Brush to clean the Impeller Chamber thoroughly. (Where the impeller sits in the Motor)
8. Reassemble in the reverse order, ensure an aquarium safe lubricant is used to lubricate the O-ring on the Impeller Cover.
9. Repeat steps 5-8 for the Protein Skimmer Pump.

Cleaning Your Power Head



Note: The Protein Skimmer Pump varies slightly. There is no inlet elbow and the Impeller Cover and Impeller Cover Lock are a single piece. The shaft of this pump is also stainless steel instead of ceramic.

The additional 2 Year Extended Guarantee applies when you REGISTER with Aqua One. See below for details.

ATTENTION!

PLEASE RETAIN YOUR PROOF OF PURCHASE AND GUARANTEE

Congratulations on your purchase of a quality Aqua One product. This product will last you many years under normal usage.

About this Guarantee

The Manufacturer or Distributor of Aqua One goods is collectively known herein as "Aqua One". Please refer to contact details for Aqua One below or on the applicable Aqua One website. Any product that is covered by its own Guarantee (as enclosed with the product) is subject to the conditions of that Guarantee.

The benefits given to the purchaser, under Guarantee, are in addition to all other statutory rights and remedies which the purchaser has in respect of goods under legislation in the applicable country of purchase. This Guarantee shall not affect any such rights and should be read subject to such legislation.

1.0. Terms and Conditions of Guarantee.

- 1.1. Aqua One warrants to the purchaser, for 2 Years from date of original purchase, to repair or replace goods where fault is found due to defective materials or faulty workmanship and where goods do not operate in accordance with the instructions.
- 1.2. All claims for repair or replacement must be made at place of purchase.
- 1.3. The original and dated Proof of Purchase (receipt) must be supplied with all goods claims. Please also provide this Guarantee where possible.
- 1.4. All goods subject to claim under Guarantee should be prepared for transportation in the original packaging or other comparable packaging which offers the same degree of protection.
- 1.5. Where goods are repaired or replaced under Guarantee, these goods are Guaranteed for the remainder of either the original Guarantee or Extended Guarantee period.
- 1.6. Where claims on inspection reveal goods are in normal working order, Aqua One will request reimbursement of all reasonable costs incurred.

2.0. Other Terms and Conditions – Extended Guarantee

- 2.1. The Extended Guarantee period is for an additional 1 Year and commences on expiration of the standard guarantee period.
- 2.2. Application for Extended Guarantee is FREE of any registration cost to the purchaser on completion of the Extended Guarantee questionnaire which may be found with the Aqua One goods purchased or on the applicable Aqua One website. (See below)
- 2.3. Upon receipt and acceptance of the questionnaire, Aqua One will forward a Certificate of Extended Guarantee to the purchaser.
- 2.4. For more information on how we collect, hold, use and disclose personal information provided to us, please refer to our Privacy Statement on the Aqua One websites or write to our Privacy Officer, in your country of purchase.
- 2.5. Where Aqua One determines goods are being used in a manner contrary to the instructions, specifications or this Guarantee, Aqua One reserves the right to terminate Extended Guarantee for such goods and will provide written notice to the purchaser.

3.0. Exclusions and Limitations

Where permitted by local law, the following exclusions and limitations apply in regard to the Guarantee:

- 3.1. Goods claims where fault is due to, but not limited by a) misuse b) neglect c) abuse d) fire or flood e) normal wear and tear f) accidental breakage g) Acts of God h) mains voltage fluctuation or supply problems i) connection to any voltage other than what is stated on the rating plate j) modification or tampering to electrical cord or plug, k) vermin, insects or foreign object l) liquid spillage or submersion of goods where goods are not designed to sustain such use or duress.
- 3.2. Where inspections reveal goods are in normal working order including where noise or vibration is consistent with normal goods operation.
- 3.3. Attempted repairs or modifications by unauthorised persons, including but not limited to modifications to the electrical lead or plug.
- 3.4. Where the goods factory rating plate has been removed, altered, damaged or is rendered illegible.
- 3.5. Where goods are not installed, operated or maintained in accordance with Aqua One's goods instructions, specifications or this Guarantee.
- 3.6. Replacement or repair of worn consumables or replacement of lost goods, parts or components.
- 3.7. Costs associated with goods transportation, removal, installation, postage or cost of insurance.
- 3.8. Any damage incurred whilst installing, transporting or moving the goods.
- 3.9. Subject to certain local statutory rights and obligations to the contrary, and this guarantee shall not affect those rights or obligations, where, to the full extent permitted by law:
 1. all express and implied warranties and conditions under statute or general law, are expressly excluded and Aqua One, where permitted, will limit liability as follows and at Aqua One's option to: in regard to goods either a) the replacement of goods or supply of equivalent goods b) the repair of goods or the cost of replacing the goods or of acquiring equivalent goods OR in regard to services either c) the re-supply of services d) the cost to re-supply services.
 2. Aqua One will not be liable for any loss or damage, including consequential loss or damage either directly or indirectly, or for any incidental expenses, of any kind, and in any way whatsoever.

(1) Consumables include items such as replacement impellers, shafts, bushings, filter media and other plastic components.

Aqua One can be contacted in: Australia

Kong's (Aust.) Pty. Limited
PO Box 863, Ingleburn
1890 NSW Australia
www.aquaone.com.au

Hong Kong

Kong's Aquarium Supplies Co., Ltd
No 31, 3/F Thriving Industrial Centre
26-38 Sha Tsui Road, Tsuen Wan
Hong Kong
www.aquaone.co.hk

New Zealand

Kong's (NZ) Limited
PO Box 15 - 183 Tauranga
2015 New Zealand
www.aquaone.co.nz

United Kingdom

Kong's (UK) Limited
C/O Aqua Pacific UK Ltd
PO Box 268
Romsey Hampshire, SO51 0WW
United Kingdom
www.aquaone.co.uk