

AquaGrande 120/150/180

Aqua One®



Instruction Manual

Important Safeguards

This appliance is not intended for use by children or infirm persons without supervision. Young children should be supervised to ensure that they do not play with the appliance.

Warning: To guard against injury, basic safety precautions should be observed, including the following:

1. Read and follow all safety instructions before using this appliance.

2. Danger: To avoid possible electric shocks, special care should be taken since water is employed in the use of aquarium equipment, for each of the following situations do not attempt repairs yourself. Return the appliance to an authorised service facility for service or discard the appliance.

a) If the light falls into water, do not reach for it, unplug it and then retrieve it. If the electrical components of the appliance get wet, unplug the appliance immediately (non immersible equipment only).

b) If the aquarium shows any sign of abnormal water leakage, immediately unplug it from the power source.

c) Carefully examine the aquarium after installation. It should not be plugged in when there is water on parts which are not intended to be wet.

d) Do not operate any aquarium if it has a damaged cord or plug, or if it is malfunctioning, or dropped or damaged in any manner.

A "drip loop" (see the diagram) should be arranged by the user for each cord connecting an aquarium component to a receptacle. The drip loop is the part of the cord below the level of the receptacle or the connector if an extension cord used. It is used to prevent water traveling along the cord and coming in contact with the receptacle.

If the plug or receptacle does get wet, do not unplug the appliance. Disconnect the fuse or circuit breaker that supplies the power to the appliance, then unplug and examine for presence of water in the receptacle.

3. Close supervision is necessary when the appliance is used by or near children.

4. Always unplug the aquarium from the electrical outlet; when not in use, before putting on or taking off parts, before any type of mainte-

nance, or cleaning. Never yank the cord to pull it from the outlet. Grasp the plug and unplug to disconnect.

5. Do not use the aquarium for reasons other than the intended use. The use of attachments that are not recommended or sold by the aquarium manufacturer may cause the product to be unsafe. This is not recommended.

6. Do not install or store the aquarium where it will be exposed to weather or temperatures below freezing.

7. Make sure any component mounted on a tank is securely installed before operating it.

8. Read and observe all the important notices on the aquarium.

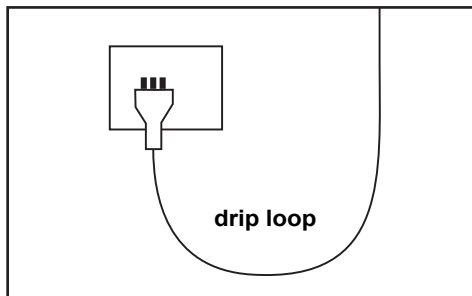
9. Ensure input voltage is the same voltage as your local power supply.

10. If an extension cord is necessary, a cord with a proper rating should be used. Care should be taken to arrange the cord so that it will not be tripped or pulled.

11. A **G.F.C.I** (Ground fault circuit interrupter) & surge protector is recommended for all electrical appliances.

12. Ensure your hand is dry when turning the power switch on/off and when inserting/removing the power cord from the receptacle.

13. If you are in any doubt about the electrical installation or safety of this product you must consult a qualified electrician.



For Guarantee Conditions, please refer to the Guarantee form that is enclosed with this product.

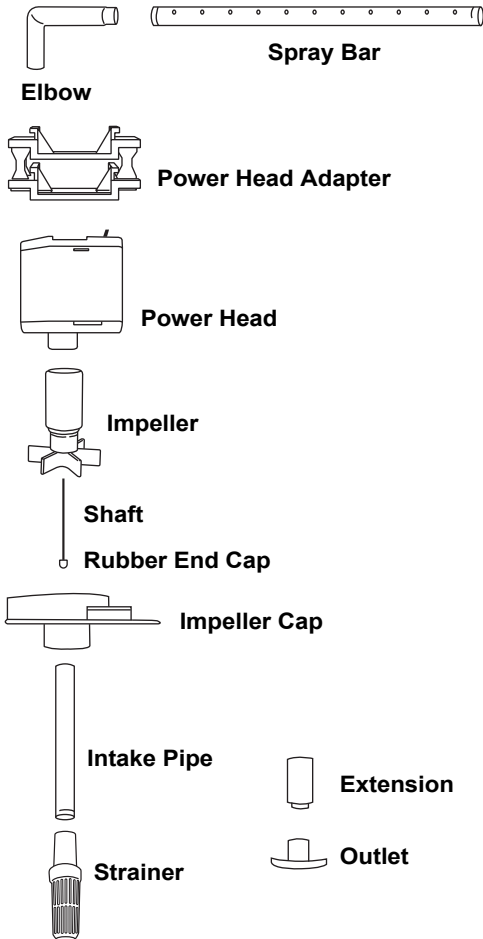
Before First Use / Preparation

Read and follow all the instructions, even if you feel you are familiar with the product and find a place to the instructions handy for future reference. Your attention is drawn particularly to the sections concerning "IMPORTANT SAFEGUARDS" and the "WARRANTY CONDITIONS". Please insure you retain your original purchase receipt in the event that warranty service is required.

Carefully unpack the aquarium making sure you keep all the packing material until all the parts of the product have been found and the product has been assembled.

This Product is shipped to you in a factory sealed carton. Should the Product be damaged, dropped, malfunctions in any way, or if the glass is damaged and requires replacement, contact the retailer where the product was purchased for inspection.

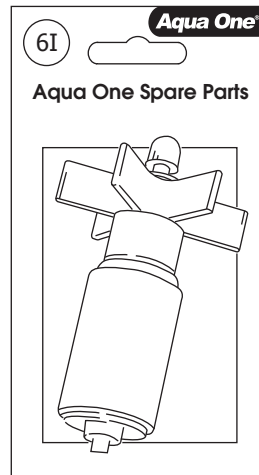
Know Your Tank



Replacement Parts & Filter Media

Use Aqua One Genuine Spare Parts Only. See your local Aqua One Dealer and look for the number listed below for the spare part you require. Alternately you will find these numbers on the silver label located on the product.

AquaGrande 120 Sponge	6S
AquaGrande 150 Sponge	7S
AquaGrande 180 Sponge	8S
AquaGrande 120 Wool	6W
AquaGrande 150 Wool	7W
AquaGrande 180 Wool	8W
AquaGrande 120 Impeller	6I
AquaGrande 150 Impeller	7I
AquaGrande 180 Impeller	8I



Set Up Instructions

1. Remove the **Filter Unit** and **Light Unit** from the **Aquarium Body**.
2. Take all lids on the **Filter Unit** off.
3. Remove the **Spray Bar, Power Head** and **Filter Trays**.
4. In the last filter tray you will find the remaining accessories required to complete the set up of your filter system.
5. Take the **Filter Trays** and all filter media to the sink. Ensure there is no detergent residue in or around the sink.
6. Open the **Ceramic Noodles** and **Carbon (see Tips)**. Refer to the diagrams (next page) for the correct setup of your aquarium.
7. Empty the **Ceramic Noodles** into the **Filter Trays**. Place the **Carbon** bags into the **Filter Trays**. Fig 1



Fig 1

8. Run tap water through them to remove any dust. **DO NOT WASH IN SOAP OR DETERGENT**.
9. Rinse the **Black Sponges** and place them on top of the **Ceramic Noodles** and **Carbon** bags. Fig 2



Fig 2

10. Rinse the **Wool Pads** and place them on top of the **Black Sponges**. Fig 3

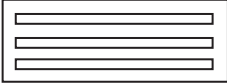


Fig 3

Filter Media Set Up Diagrams

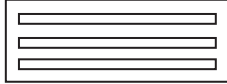
AquaGrande 120

1



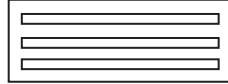
1 x Wool Pad
1 x Black Sponge
1 x Ceramic Noodles

2



1 x Wool Pad
1 x Black Sponge
1 x Ceramic Noodles

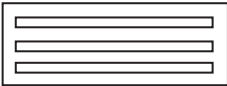
3



1 x Wool Pad
1 x Black Sponge
2 x Carbon

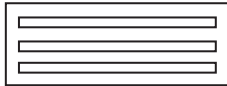
AquaGrande 150

1



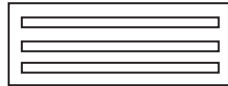
1 x Wool Pad
1 x Black Sponge
1 x Ceramic Noodles

2



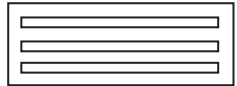
1 x Wool Pad
1 x Black Sponge
1 x Ceramic Noodles

3



1 x Wool Pad
1 x Black Sponge
2 x Carbon

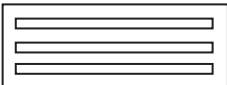
4



1 x Wool Pad
1 x Black Sponge
2 x Carbon

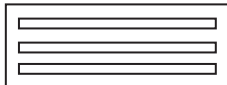
AquaGrande 180

1



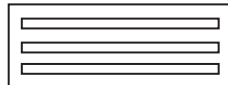
1 x Wool Pad
1 x Black Sponge
1 x Ceramic Noodles

2



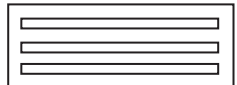
1 x Wool Pad
1 x Black Sponge
1 x Ceramic Noodles

3



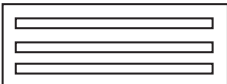
1 x Wool Pad
1 x Black Sponge
1 x Ceramic Noodles

4



1 x Wool Pad
1 x Black Sponge
2 x Carbon

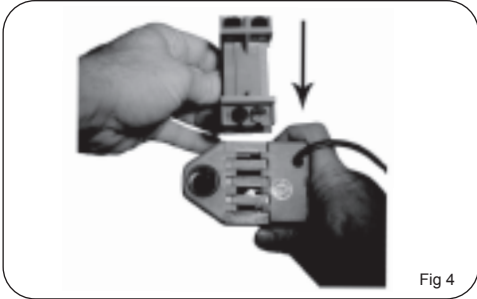
5



1 x Wool Pad
1 x Black Sponge
2 x Carbon

11. Leave the **Filter Trays** at the sink.

12. Slide the **Power Head Adaptor** into the top of the **Power Head**. Fig 4 Note: this may already be connected.



13. Insure it is inserted firmly. Fig 5



14. Once complete slide the **Power Head** into the bottom of the **Filter Unit**. Fig 6



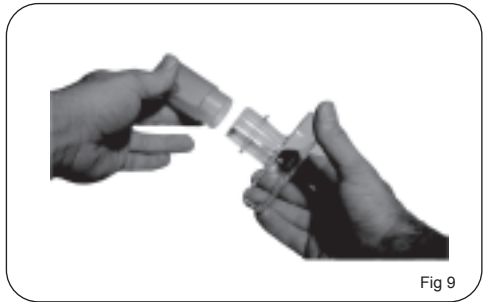
15. Connect the **Intake Pipe** and **Strainer** together. Fig 7



16. Insert them into the bottom of the **Power Head**. Fig 8



17. Connect the **Outlet** and **Extension** together. Fig 9



18. Connect them into the bottom of the **Filter Unit**. Fig 10



19. Then place the **Filter Trays** with the washed media inside them in to the **Filter Unit**.

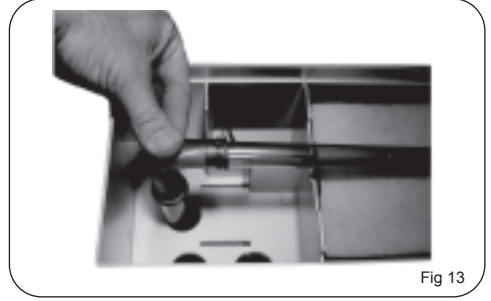
20. You will find the silicon elbow has a tube inserted in it. This *may* need to be forced in further, having an overall length of 15cm. Fig 11



21. Connect the **Spray Bar** and the silicon **Elbow** together. Fig 12



22. Insert the **Elbow** and **Spray Bar** into the top of the **Power Head**, press down firmly ensure it is a tight fit. Fig 13

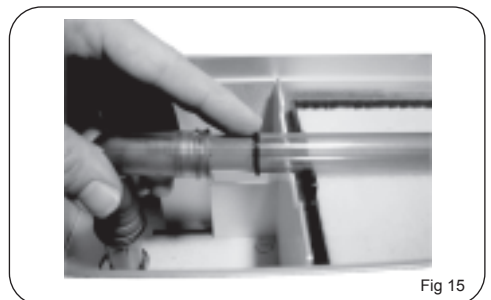


23. Push the first filter tray to the right as far as it will go.

24. You will notice the **Power Head** is sitting on an angle. Fig 14



25. In order to correct this you need to slide the o ring on the **Spray Bar** along and position it so it is resting against the edge of the first filter tray. Do this until the **Power Head** is straight. Fig 15



26. Place the aquarium on a flat level surface strong enough to support its weight. We recommend a genuine **Aqua One** aquarium cabinet rather than general household furniture. Fig 16



Fig 16

27. Place the **Filter Unit** (once complete) on top of the **Aquarium Body** towards the back. Fig 17

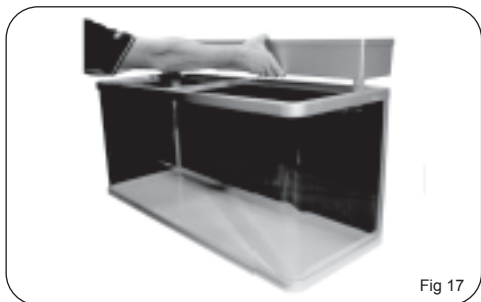


Fig 17

29. Run water through & churn it over with your hand until the water running out of the bucket is clear. It is important to wash the gravel thoroughly. Repeat this process several times until all the gravel has been washed. Fig 19



Fig 19

30. Place washed gravel over the base of the Aquarium. Fig 20

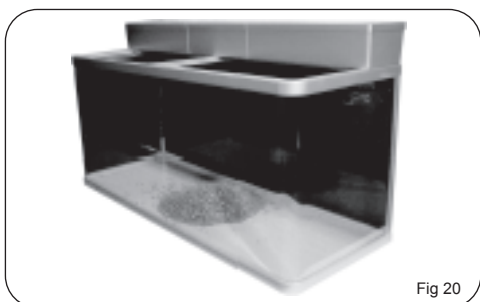


Fig 20

28. Wash aquarium gravel. Place a portion of gravel into a bucket. Fig 18

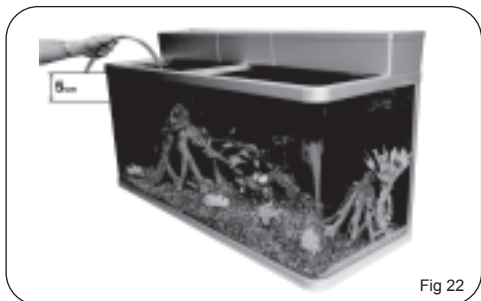


31. At this stage place plastic plants, decorations and heater (**see Tips**) into the tank. Fig 21



Fig 21

32. Fill the aquarium with tap water to the level indicated in Fig 22.



33. Use **Aqua One** quality Water Conditioner (sold separately) to remove harmful chemicals from tap water. E.g. chlorine (**see Tips**) Fig 23



34. Place the **Light Unit** on the front of the Aquarium. Fig 24



35. Plug in the **Power Head, Light Unit** and **Heater** (if installed) and turn on. Fig 25. Refer to Important *Safety guards* for set up of the **Drip Loop**.

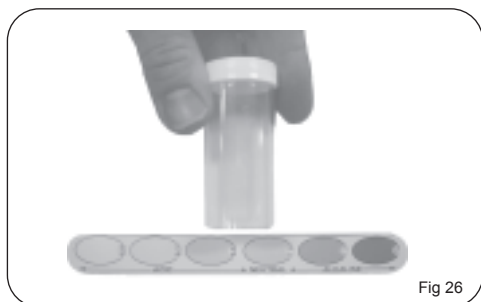


36. Insure the holes of the **Spray Bar** are facing down and that water is flowing through it.

37. Replace all lids on the **Filter Unit**.

38. Turn the light switches on ensure the lights work.

39. Test and adjust pH levels Fig 26



40. Allow the aquarium to stand for 3 to 4 days before the introduction of any fish. Fig 27



Introduction of Fish

41. Seek advice from your retailer for correct fish numbers and specie compatibility.

TIPS

Leave the carbon in the netting bag.

An Aqua One Heater and Thermometer is required if you are setting up a tropical or saltwater aquarium. Refer to heater instructions for correct set up and positioning.

Chlorine and other heavy metals will harm your fish. Aqua One water conditioner will remove these impurities and create a safe environment for your fish.

Note: is only a guide! You should seek professional advice from your aquarium specialist at the time of purchase.

DO NOT ADD ALL FISH AT ONCE!

Build stock levels slowly over time. Allow at least one week between additions add a filter supplement to help the biological system cope with the additional waste.

Do not over crowd. Remember all fish will grow, so allow them adequate space.

Filter Maintenance

WEEKLY See diagrams on next page...

1. Turn the **Power Head** off.
2. Remove the Lids from the **Filter Unit**.
3. Remove the **Outlet** from the top of the **Power Head**.
4. Remove the **Black Sponge** and **Wool Pad** from the **Filter Unit**.
5. Empty a small amount of water from the aquarium into a bucket.
6. Rinse the **Black Sponge**. Discard the used water; do not add it back into the aquarium.
7. Rinse the **Wool Pad** out under the tap, rinse thoroughly.
8. Re-insert the **Wool Pad** and **Black Sponge**.
9. Then connect the outlet back in to the top of the **Power Head**. Make sure the holes of the **Spray Bar** are pointing down onto the **Black Sponge** and that the end of the **Spray Bar** has the cap fitted.
10. Ensure the aquarium is full. Refer to Fig 23.
11. Turn the **Power Head** back on and ensure that water is flowing out of the **Spray Bar**.
12. Replace the lids on the **Filter Unit**.
13. Add bio booster.

MONTHLY See diagrams on next page...

1. Turn the power off. And unplug both power leads.
2. Remove the **Light Unit** and Place it somewhere safe away from water and where it will not be broken / damaged.
3. Remove **Filter Unit** from aquarium and take to sink and remove the lid.
4. Disconnect **Spray Bar** and **Elbow** and clean with double ended pipe brush.
5. Slide the **Power Head** off the bottom of the **Filter Unit**. Fig 1
6. You will need a flat head screw driver. Fig 2
7. Holding the **Power Head** upside down Insert the screw driver into the larger slot of the **Power Head**. Fig 3
8. Carefully lever the screw driver downwards.
9. This will pop one side of the **Impeller Cap** off. Fig 4
10. Turn the **Power Head** around, repeat steps 7, 8 & 9.

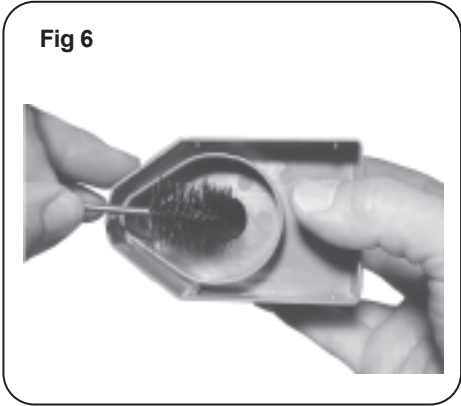
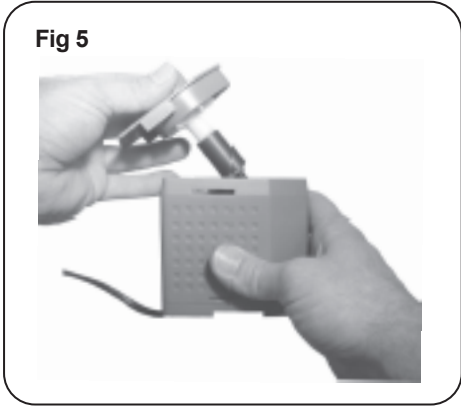
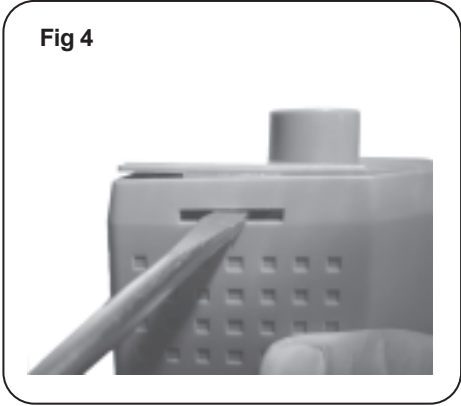
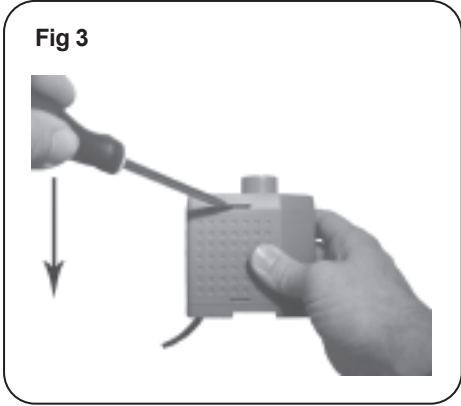
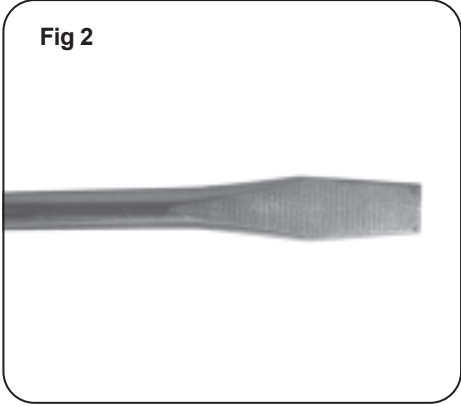
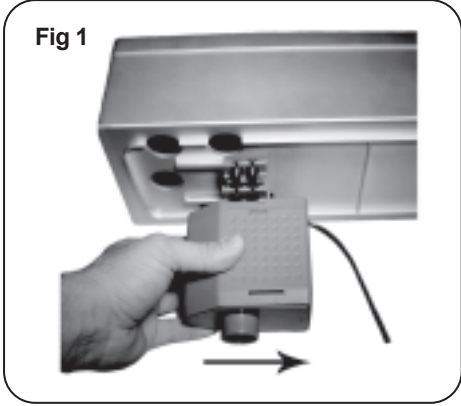
9. Remove the **Black Rubber End Cap**. The **Shaft** may also come out at the same time, if not then pull it out.
7. Grasp the **Impeller Cap** and remove it from the **Impeller well**. Fig 5
8. Use a double ended pipe brush to clean **Impeller** and inside of **Impeller well**. Fig 6
9. Also run a pipe brush through the outlet at the top of the **Power Head**.
10. Clean the **Intake pipe** and **Strainer** thoroughly.
11. Reconnect all parts and place **Filter Unit** back onto the aquarium.
12. Ensure the power lead is not wet and plug it back in.
13. Turn the power back on and check that water is flowing through the **Spray Bar**.
14. Replace the **Light Unit** and Lid.

YEARLY

The ceramic noodles are designed to be maintenance free, **NEVER RINSE THEM IN TAP WATER**.

See **Hints & Tips for Best Results** for more information.

Filter Maintenance Diagrams



Hints & Tips For Best Results

LIVE PLANTS

Once the water conditions and pH levels have been corrected, live plants can be added to the aquarium. Remember to empty some water from the aquarium before adding anything to it.

REMEMBER LIVE PLANTS NEED TO BE FED! An aquarium safe plant fertiliser should be used.

LIGHTING

No more than 8 hours of light each day and definitely no natural light. Longer light times will accelerate algae growth in the aquarium and has no benefit to plants or fish.

- Specialist light tubes are available through retailers for saltwater and planted aquariums.

- We recommend replacing the light globe once every twelve months based on the light being on 8 hours a day as the spectrum of light changes over time.

FILTER MEDIA

Biological Filtration (Ceramic Noodles)

Biological filtration is a process where toxic nitrogen compounds such as ammonia and nitrite (fish waste) are removed from the system via a breakdown process carried out by nitrifying bacteria. (Nitrobacter and Nitrosomonas). These nitrifying bacteria need substrate with a high surface area to adhere to such as **Ceramic Noodles**.

- When starting a new system it is important to remember that bacteria takes time to develop and grow.

- You can speed up the process by 'seeding' the system with commercially available bacterial cultures / bio boosters.

- Over time this media can block up or break down so it is important to monitor it. Seek

advice from your Aquarium Specialist if either of these problems arise.

Mechanical (Carbon)

This is the removal of dissolved organic and inorganic substances through adsorption on a porous substrate or by direct chemical removal. Dissolved organic compounds are what turns the water a yellow-brown colour or causes foaming at the surface of the aquarium and need to be removed.

- Remove carbon if treating fish with medication.
- Replace every 6 – 8 weeks as the carbons absorption capacity will have depleted.
- Rinse well before placing in the aquarium. (in tap water)

Mechanical/Biological Filtration (Filter Sponge/Wool Pad)

This is the process whereby suspended solids or particulate matter are removed from the water.

It is important to remove suspended solids not only to improve clarity of the water but also to:

- Avoid smothering the gills with solids such that fish cannot breathe.
- Decrease risk of disease outbreaks - there are high numbers of bacteria associated with organic suspended solids.
- Protect the biological filter material from rapidly becoming clogged.
- Can also act as a biological filter medium by providing sufficient surface area to host beneficial bacteria.

Trouble Shooting

If you are in any doubt about the electrical installation or safety of this product you must consult a qualified electrician.

LIGHT UNIT DOES NOT WORK

1. Ensure switch is in the on position on the top of the Light Unit.
2. Check light is plugged into power supply and the switch is on
3. Check the globe is in good condition. Replace if needed.

POWER HEAD WORKING BUT NO / SLOW WATER FLOW

1. Check Impeller is in good condition and replace if needed.
2. Make sure water level in aquarium is above the Power Head. Please note the Power Head is a water proof unit.
3. Clean Impeller, Power Head and all Inlet and outlet pipes.
4. Check that the Spray Bar is inserted correctly with the end cap at the opposite end to the elbow.

AQUARIUM POSSIBLY LEAKING

1. Clean filter cartridge as this can create an overflow.
2. Make sure spray bar holes are pointed down onto the Carbon Cartridge.
3. Make sure water level is not too high Refer to Diag E.
4. If an air stone is being used check it is not bubbling water over the rim of the aquarium if so turn the air pump down.
5. Make sure the aquarium is sitting on a level surface
6. If it is a salt water aquarium remove any salt creep as it can drain water from the aquarium.

7a. Remove the Light Unit & Filter Unit from the top of the aquarium. Mark the water level. Remove any excess water that may be sitting on the edge of the aquarium. Leave for an hour. If water level drops proceed to step 7b.

7b. Remove the fish, decorations and gravel. Empty the aquarium and clean the glass **DO NOT WASH IN SOAP OR DETERGENT**. Place a piece of newspaper on a flat level solid surface. Carefully fill the aquarium ensuring not to spill any water on to the newspaper. Leave the aquarium for several hours and then inspect the newspaper for wet patches.

Aquarium Model: AquaGrande 120
Dimensions: 123 x 46 x 67cm (10mm glass)
Aquarium Volume: 285L
Filter Flow Rate: 2000l/hr
Light Wattage: 3 x 36in 30W
Power Requirements: 220 ~ 240V
Suitable: Coldwater, Tropical, Marine

Aquarium Model: AquaGrande 150
Dimensions: 156 x 46 x 69cm (12mm glass)
Aquarium Volume: 370L
Filter Flow Rate: 2000/hr
Light Wattage: 6 x 30in 25W
Power Requirements: 220 ~ 240V
Suitable: Coldwater, Tropical, Marine

Aquarium Model: AquaGrande 180
Dimensions: 186 x 50 x 76cm (12mm glass)
Aquarium Volume: 540L
Filter Flow Rate: 2000/hr
Light Wattage: 6 x 30in 25W
Power Requirements: 220 ~ 240V
Suitable: Coldwater, Tropical, Marine

Precision Manufactured in the P.R.C.
Designed in Australia by Aqua One
Distributed in Australia by:
Kong's (Aust.) Pty. Limited
48 Williamson Rd. Ingleburn.
2565 NSW Australia.

Distributed in New Zealand by:
Kong's (NZ) Limited
52 Glenlyon Avenue. Greerton.
Tauranga New Zealand.

Distributed in Hong Kong by:
Kong's Aquarium Supplies Co., Ltd
No 31, 3/F Thriving Industrial Centre
26-38 Sha Tsui Road, Tsuen Wan,
Hong Kong.

Distributed in the UK by:
Kong's (UK) Limited,
C/O Aqua Pacific UK Ltd.
PO Box 268
Romsey Hampshire
SO51 0WW
United Kingdom.



Aqua One

www.aquaone.com.au

® Aqua One and Kong's are registered trademarks.

Keep an eye out for these Aqua One products at your local retailer...



Fish keeping has never been easier...

Aqua One specialises in all of your aquarium needs.

Aqua One uses state of the art technology which results in the most efficient and superior aquarium products.

The Aqua One range includes a wide range of curved glass aquariums, air pumps, filters, power heads, heaters, reflectors, under water lighting, along with fish foods, cleaning and maintenance accessories and decorations.