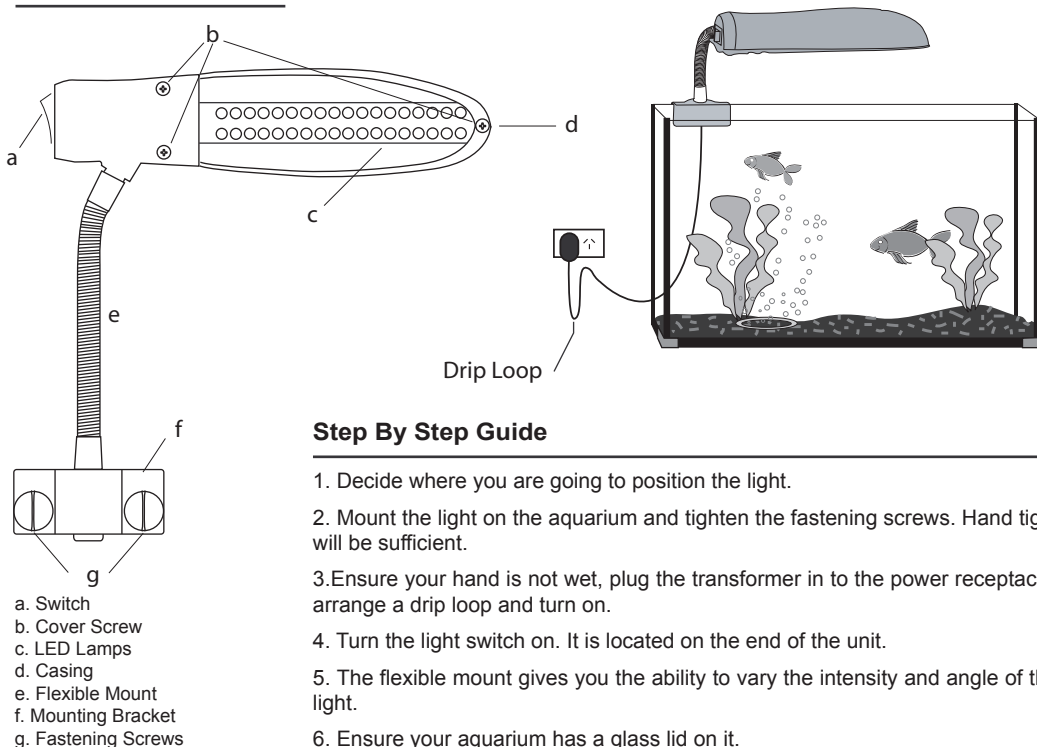


# Know Your Light



## Step By Step Guide

1. Decide where you are going to position the light.
2. Mount the light on the aquarium and tighten the fastening screws. Hand tight will be sufficient.
3. Ensure your hand is not wet, plug the transformer in to the power receptacle, arrange a drip loop and turn on.
4. Turn the light switch on. It is located on the end of the unit.
5. The flexible mount gives you the ability to vary the intensity and angle of the light.
6. Ensure your aquarium has a glass lid on it.

## Aqua One - 2 + 1 Year Guarantee

Congratulations on your purchase of a quality Aqua One product. This product will last for many years under normal usage the guarantee commences from the day of purchase. You must provide proof of purchase when you submit your equipment for repair under guarantee.

The benefits given to the purchaser by the manufacturers guarantee are in addition to all other rights and remedies which the purchaser has in respect of the equipment under the legislation of the appropriate country of purchase.

Your 2 year guarantee can be extended by a further 1 year upon registration with the distributor. This can be done online at the address below or by completing the extended guarantee registration card and returning by post to the address of your country of purchase. [www.aquaone.com.au](http://www.aquaone.com.au)  
General Guarantee Conditions:

1. All claims for guarantee service should be made to the place of purchase.
2. You must provide proof of purchase when you submit your equipment for repair under guarantee.
3. This guarantee extends only to defects occurring in materials or workmanship under normal use of the equipment when operated in accordance with the supplied instructions.
4. Replacement equipment is guaranteed for the remainder of the original manufacturer's guarantee period.
5. Guarantee does not cover:
  - a. Cost of freight, postage or the cost of insurance.
  - b. Service costs arising from failure to correctly adjust the controls of the product or to clean the hoses, filter media, impellers, pump heads, failure to observe the manufacturer's instructions or inspections that reveal that the equipment is in normal working order.
  - c. Equipment failures caused by misuse, neglect, normal wear and tear, accidental breakage, repairs or modification by unauthorised persons, lightning strikes, mains voltage fluctuation, earthquakes, vermin infestation or liquid spillage.
  - d. Consumables, such as impellers, shafts, filter cartridges, filter media, sponges, wool, light tubes, lamps, bulbs or starters.
  - e. In no event will the manufacturer or distributor of that country be liable for any consequential or incidental damage including, but not limited to loss of livestock, property damage, damage to equipment, appliances or furnishings arising from the use of this product or from failure of this product.
  - f. Damaged incurred in transit resulting from inadequate packing.
6. It is recommended that all equipment subject to claim should be prepared for transportation in its original packaging or other suitable packaging which offers the same degree of protection.



Precision Manufactured in the P.R.C.  
Designed in Australia by Aqua One  
Distributed in Australia by:  
**Kong's (Aust.) Pty. Limited**  
48 Williamson Rd. Ingleburn  
2565 NSW Australia

Distributed in New Zealand by:  
**Kong's (NZ) Limited**  
52 Glenlyon Avenue, Greerton  
Tauranga New Zealand

Distributed in Hong Kong by:  
**Kong's Aquarium Supplies Co., Ltd**  
No 31, 3/F Thriving Industrial Centre  
26-38 Sha Tsui Road, Tsuen Wan,  
Hong Kong

Distributed in the UK by:  
**Kong's (UK) Limited,**  
C/O Aqua Pacific UK Ltd.  
PO Box 268  
Romsey Hampshire  
SO51 0WW  
United Kingdom



[www.aquaone.com.au](http://www.aquaone.com.au)  
© Aqua One and Kong's are registered trademarks.

## Important Safeguards

**This appliance is not intended for use by children or infirm persons without supervision. Young children should be supervised to ensure that they do not play with the appliance.**

**Warning: To guard against injury, basic safety precautions should be observed, including the following:**

1. Read and follow all safety instructions before using this appliance.

2. Danger: To avoid possible electric shocks, special care should be taken since water is employed in the use of aquarium equipment. For each of the following situations do not attempt repairs yourself. Return the appliance to an authorised service facility for service or discard the appliance.

a) If the light falls into water, do not reach for it, unplug it and then retrieve it. If the electrical components of the appliance get wet, unplug the appliance immediately (non immersible equipment only).

b) If the aquarium shows any sign of abnormal water leakage, immediately unplug all appliances from the power source.

c) Carefully examine the light after installation. It should not be plugged in when there is water on parts which are not intended to be wet.

d) Do not operate any aquarium product if it has a damaged cord or plug, or if it is malfunctioning, or dropped or damaged in any manner.

A "drip loop" (See the diagram) should be arranged by the user for each cord connecting an aquarium component to a receptacle. The drip loop is the part of the cord below the level of the receptacle or the connector if an extension cord is used. It is used to prevent water traveling along the cord and coming in contact with the receptacle. If the plug or receptacle does get wet, do not unplug the appliance. Disconnect the fuse or circuit breaker that supplies the power to the appliance, then unplug and examine for presence of water in the receptacle.

3. Close supervision is necessary when the appliance is used by or near children.

4. Always unplug the light from the electrical outlet, when not in use, before putting on or taking off parts, before any type of maintenance, or cleaning. Never yank the transformer to pull it from the outlet. Grasp the transformer and unplug to disconnect.

5. Do not use the light for reasons other than the intended use. The use of attachments that are not recommended or sold by the light manufacturer may cause the product to be unsafe. This is not recommended.

6. Do not install or store the light where it will be exposed to weather or temperatures below freezing.

7. Make sure any component mounted on a tank is securely installed before operating it.

8. Read and observe all the important notices on the light.

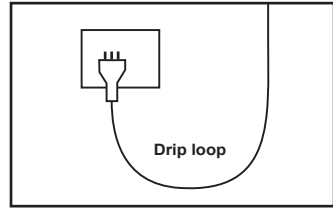
9. Ensure input voltage is the same voltage as your local power supply.

10. If an extension cord is necessary, a cord with a proper rating should be used. Care should be taken to arrange the cord so that it will not be tripped or pulled.

11. A **G.F.C.I** (Ground fault circuit interrupter) & surge protector is recommended for all electrical appliances.

12. Ensure your hand is dry when turning the power switch on/off and when inserting/removing the transformer from the receptacle.

13. If you are in any doubt about the electrical installation or safety of this product you must consult a qualified electrician.



**For Guarantee Conditions, please refer to the Guarantee conditions listed at the back of this instruction sheet.**

## Before First Use / Preparation

Read and follow all the instructions, even if you feel you are familiar with the product and find a place to keep the instructions handy for future reference. Your attention is drawn particularly to the sections concerning "IMPORTANT SAFEGUARDS" and the "GUARANTEE CONDITIONS". Please ensure you retain your original purchase receipt in the event that guarantee service is required.

Carefully unpack the light making sure you keep all the packing material until all the parts of the product have been found and the product has been assembled.

This product is shipped to you in a factory sealed carton. Should the product malfunction in any way or if the unit is damaged and requires replacement, contact the retailer where the product was purchased for inspection.

## Hints & Tips for Best Results

### Lighting:

No more than 8 hours of light a day and definitely no natural light. Longer light times will accelerate algae growth in the aquarium and has no benefits to plants or fish.

## Trouble shooting

### LIGHT DOES NOT WORK

1. Ensure the transformer is inserted correctly and the switch is in the on position.

## Changing the LED Lamps

LED Lamps have a life of about 500,000 hours. Under normal operating conditions, this means they will last for more than 100 years. Therefore, this unit has been manufactured with irreplaceable lamps.

In the unlikely event that the LED lamps fail, please refer to the guarantee conditions on the back of this instruction sheet.