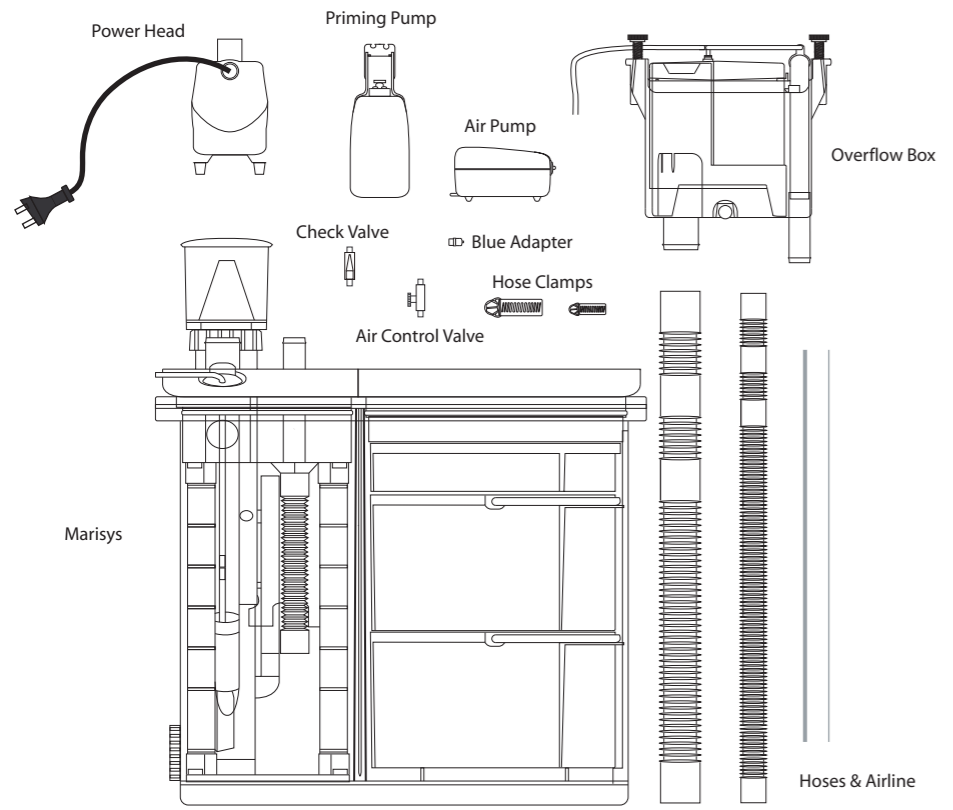
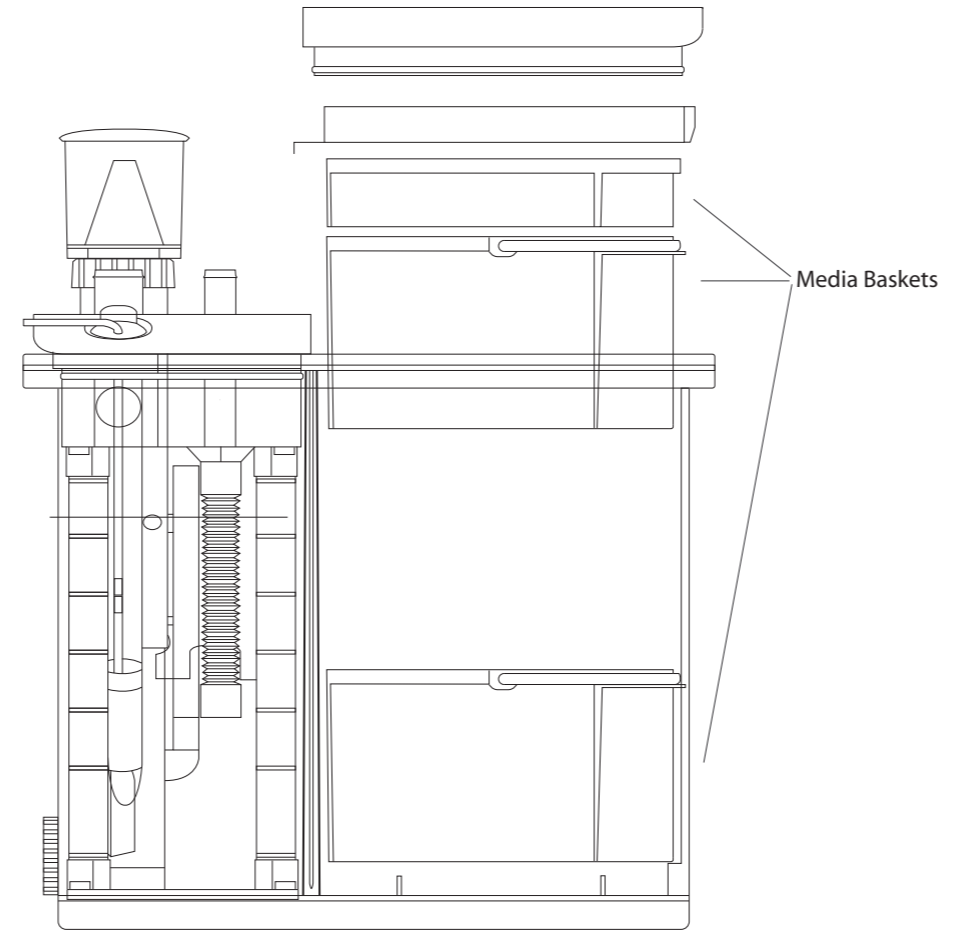


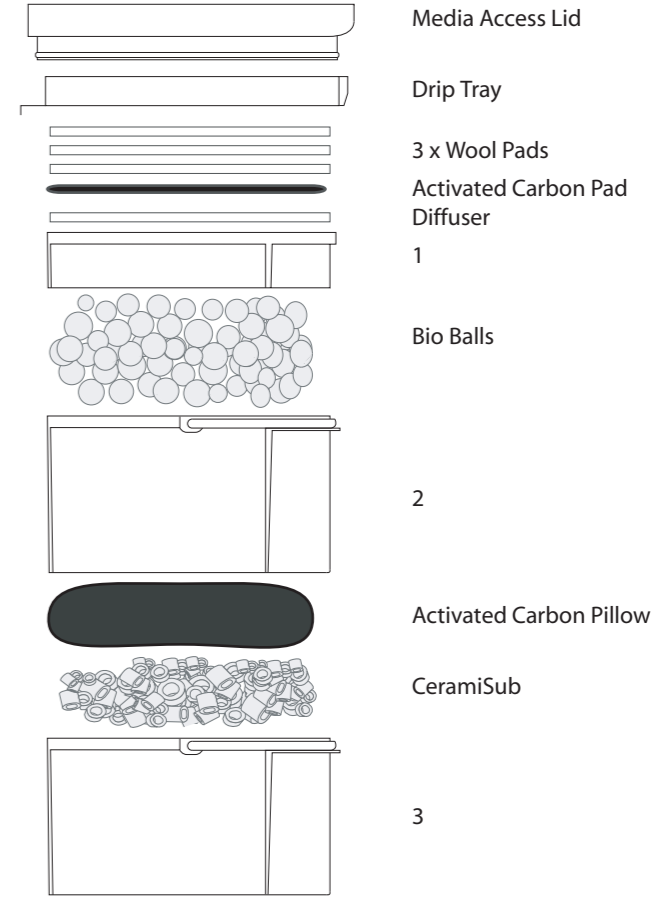
Aqua One MariSys 240 Quick Set Up Guide



1. Remove all of the components from the box, lay them out and identify them. Refer to the Exploded View sheet also.

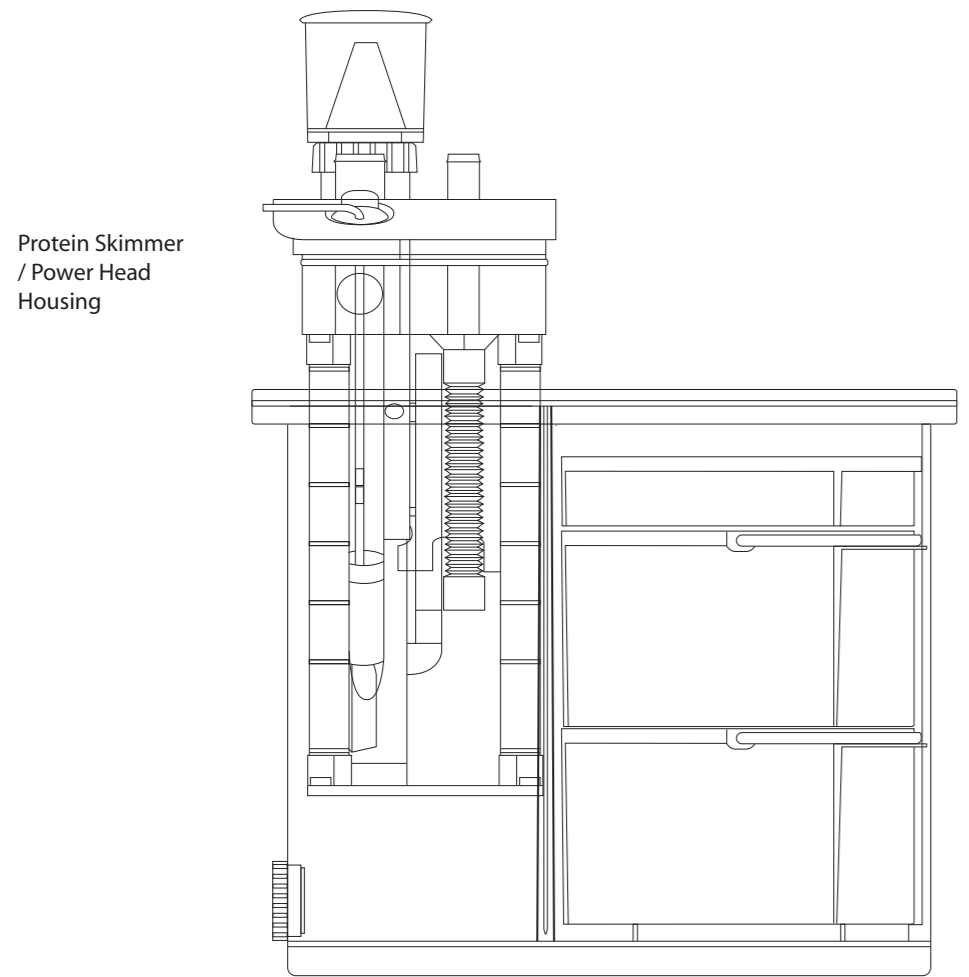


2. Remove Media Access Lid, Drip Tray and all Media Baskets.

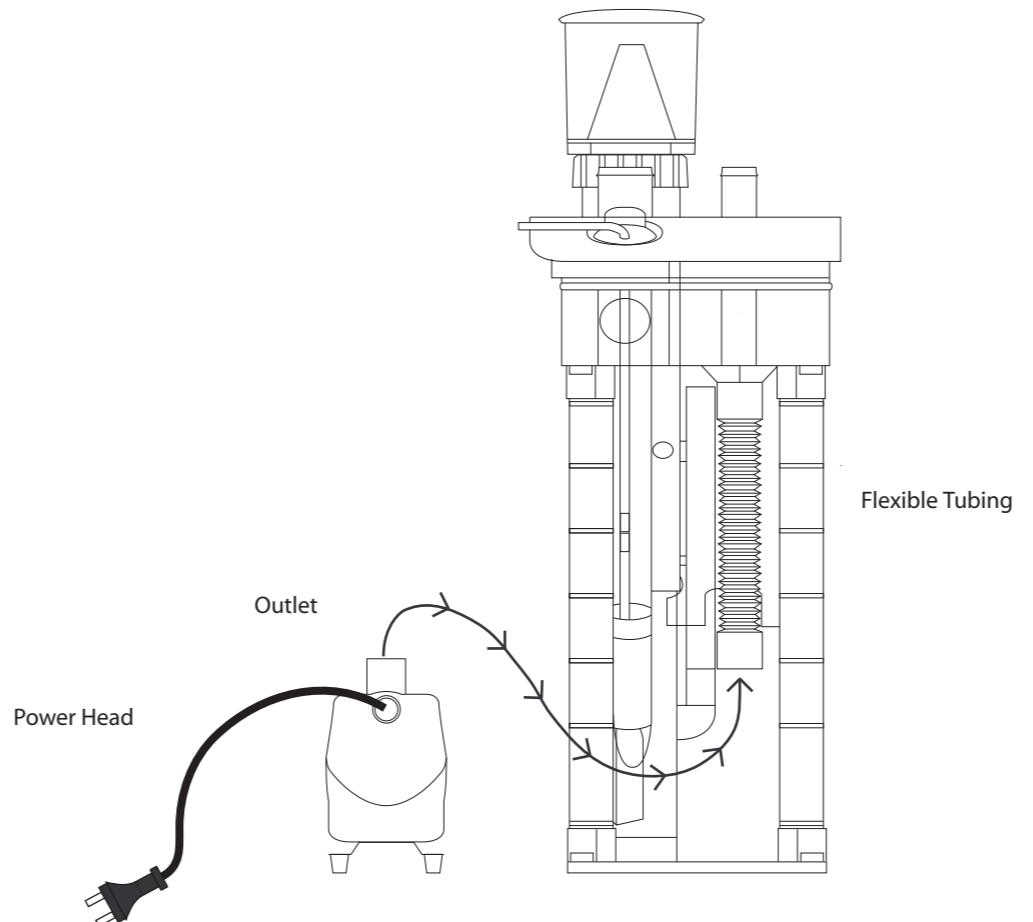


3. Remove Carbon Pillow and CeramiSub from their plastic bags. Wash all media under clean tap water and place all media back into the Media Baskets and back into the Filter Box. Do not replace the Drip Tray or Media Access Lid.

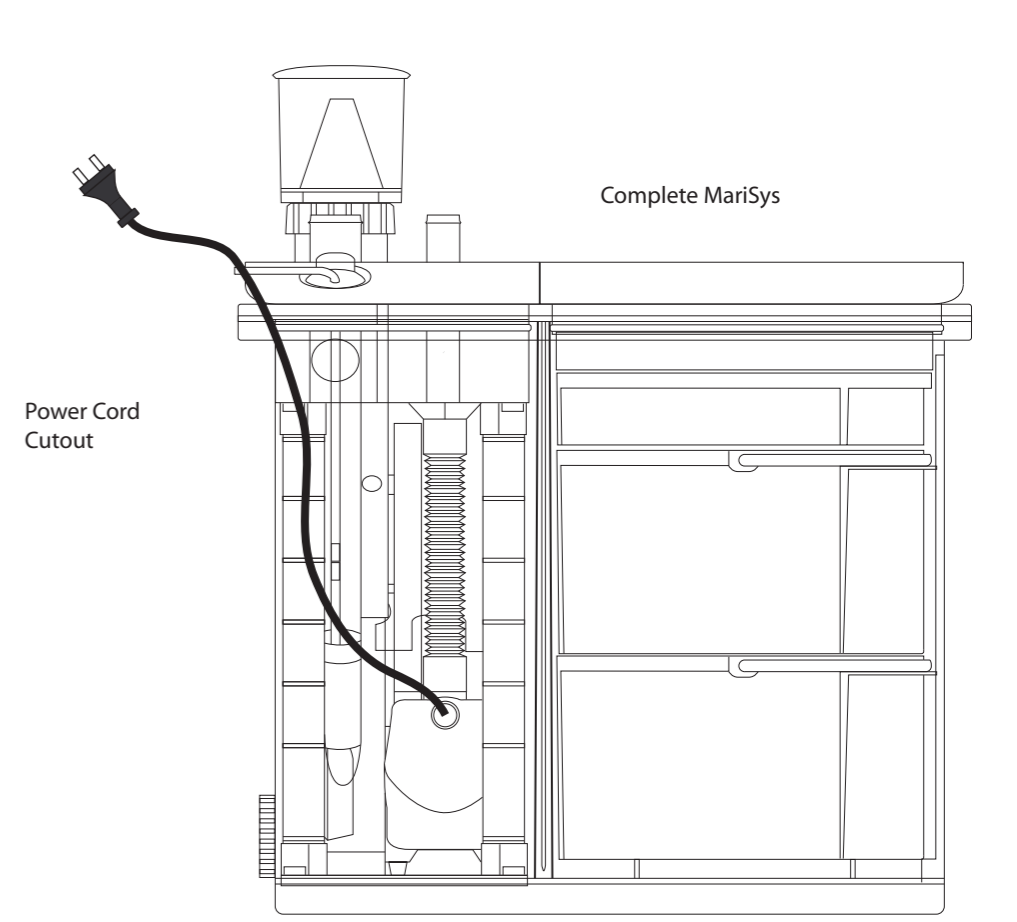
4. Remove the Protein Skimmer / Power Head Housing.



5. Connect the Small piece of flexible hose to the Outlet of the Power Head and position the Power Head in the housing. Feed the power cord through the side of the housing.



6. Slide the Housing back into the Filter Box, ensure the power cord from the Power Head is fed through the Power Head Cut out. DO NOT force the Housing in. Remove and try again.



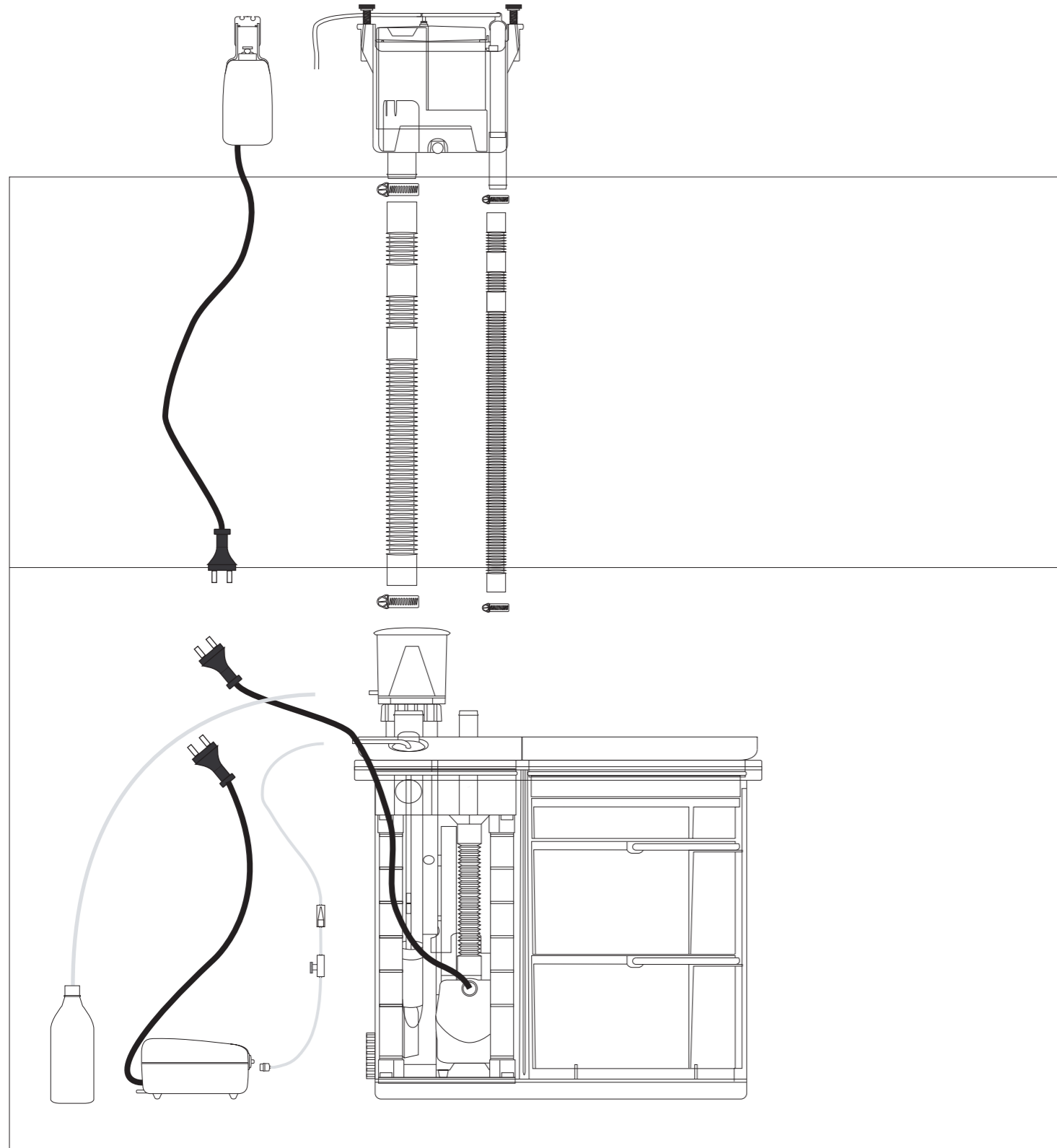
7. Place the complete MariSys under the aquarium. Hang the Overflow Box on the back or side of the aquarium. Measure and cut Hoses to length. Allow a little slack. Place Hose Clamps over the end of the Hoses and connect them to both the Overflow Box and MariSys and tighten.

Position the Priming Pump next to the Overflow Box and connect the Airline already attached to the Overflow Box (longer piece) to the Inlet port of the Priming Pump, indicated by the small arrow pointing towards the pump on the red inlet/outlet port.

Connect the second (shorter piece) of Airline to the outlet indicated by the small arrow pointing away from the Pump and secure it so it is feeding back into the aquarium.

Position the Protein Skimmer Air Pump Next to or on top of the Filter Box. Connect the blue adapter into the Air Pump outlet. Slide the other end of the Airline onto the Protein Skimmer Airline Connector.

Attach the Waste Hose to the outlet on the Collection Cup of the Protein Skimmer and feed the other end into an empty bottle.



8. Ensure the aquarium is full of water.

Fill the Priming Chamber in the back of the Overflow Box with water.

Continue to add water to the Priming Chamber as it will travel down the hose and into the MariSys.

Add water until the level in the MariSys is about 1cm above the Maximum level indicator.

Double check all attachments and connections.

Ensure hands are dry and Plug in all power cords and arrange a "Drip Loop"

Turn power on.

It may take up to 30 seconds for the unit to start.

Once the unit is running check for leaks.

For more detailed setup instructions and maintenance requirements refer to the instruction booklet supplied with this product.

