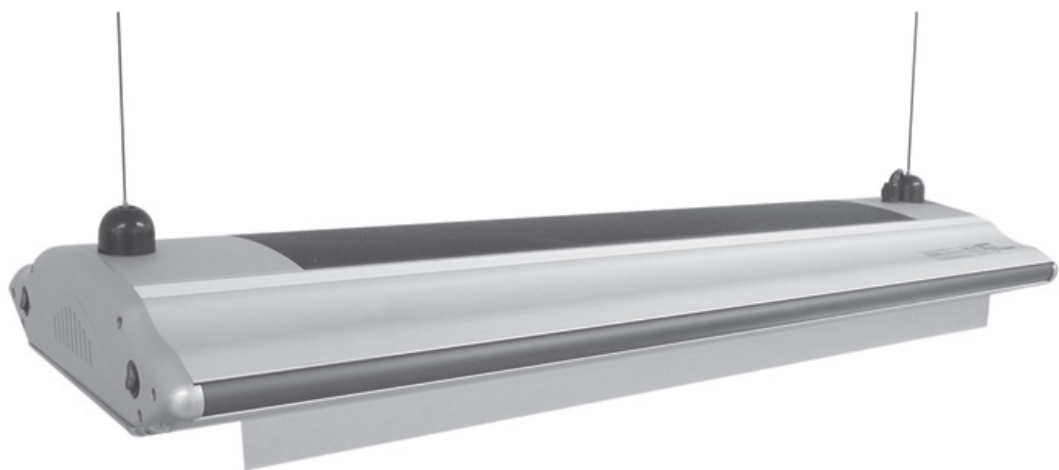


HaliGlo 250W LED

Aqua One[®]

600/1000/1200/1500



Instruction Manual

Important Safeguards

This appliance is not intended for use by persons (including children) with reduced physical, sensory or mental capabilities, or lack of experience and knowledge unless they are supervised adequately by a responsible person to ensure that they can use the appliance safely. Children should be supervised to ensure that they do not play with the appliance.

Warning: To guard against injury, basic safety precautions should be observed, including the following:

1. Read and follow all safety instructions before using this appliance.

2. Danger: To avoid possible electric shocks, special care should be taken since water is employed in the use of aquarium equipment. For each of the following situations do not attempt repairs yourself. Return the appliance to an authorised service facility for service or discard the appliance.

a) If the light falls into water, do not reach for it, unplug it and then retrieve it. If the electrical components of the appliance get wet, unplug the appliance immediately (non immersible equipment only).

b) If the aquarium shows any sign of abnormal water leakage, immediately unplug all aquarium accessories from the power source.

c) Carefully examine the light after installation. It should not be plugged in when there is water on parts which are not intended to be wet.

d) Do not operate any aquarium electrical appliance if it has a damaged cord or plug, or if it is malfunctioning, or dropped or damaged in any manner.

e) If the external flexible cable or cord of this luminaire is damaged, it must be replaced by the manufacturer, it's service agent or similarly qualified persons in order to avoid a possible hazard.

A "drip loop" (See the diagram) should be arranged by the user for each cord connecting an aquarium component to a receptacle. The drip loop is the part of the cord below the level of the receptacle or the connector if an extension cord is used. It is used to prevent water traveling along the cord and coming in contact with the receptacle.

If the plug or receptacle does get wet, do not unplug the appliance. Disconnect the fuse or circuit breaker that supplies the power to the appliance, then unplug and examine for presence of water in the receptacle.

3. Close supervision is necessary when the appliance is used by or near children.

4. Always unplug the light from the electrical outlet, when not in use, before putting on or taking off parts, before any type of maintenance, or cleaning. Never yank the cord to pull it from the outlet. Grasp the plug and unplug to disconnect.

5. Do not use the light for reasons other than the intended use. The use of attachments that are not recommended or sold by the light manufacturer may cause the product to be unsafe. This is not recommended.

6. Do not install or store the aquarium where it will be exposed to weather or temperatures below freezing.

7. Make sure any component mounted on a tank is securely installed before operating it.

8. Read and observe all the important notices on the light.

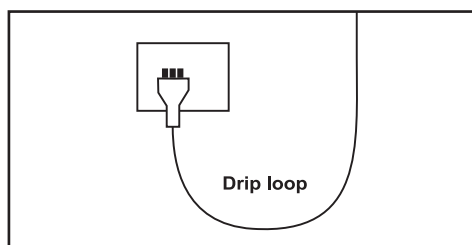
9. Ensure input voltage is the same voltage as your local power supply.

10. A G.F.C.I (Ground Fault Circuit Interrupter) & surge protector is recommended for all electrical appliances.

11. Ensure your hand is dry when turning the power switch "on/off" and when inserting/removing the power cord from the receptacle.

12. If you are in any doubt about the electrical installation or safety of this product you must consult a qualified electrician.

Appliance shall only be used with rated voltage and frequency, 220 - 240V~50HZ



For Guarantee Conditions, please refer to the Guarantee at the back of this instruction booklet.



Warning:

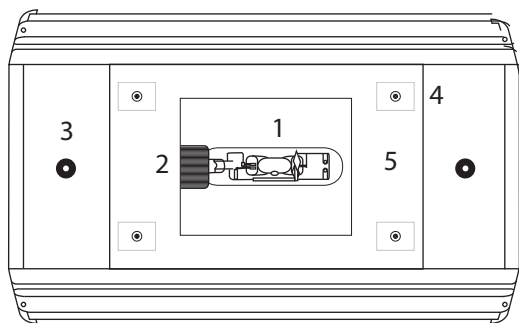
This appliance must not be disposed of together with domestic waste. It must be disposed of at an authorised centre set up for the recycling of electrical and electronic appliances. By collecting and recycling waste, you help save our natural resources. Please Make sure this product is disposed of in an environmental friendly and safe way.

Before First Use / Preparation

Read and follow all instructions, even if you feel you are familiar with the product and find a place to keep the instructions handy for future reference. Your attention is drawn particularly to the sections concerning “**IMPORTANT SAFETY-GUARDS**” and the “**AQUA ONE GUARANTEE**”. Please ensure you retain your original purchase receipt in the event that guarantee service is required.

Carefully unpack the light making sure you keep all the packing material until all parts of the product have been found and the product has been assembled.

Know Your Light

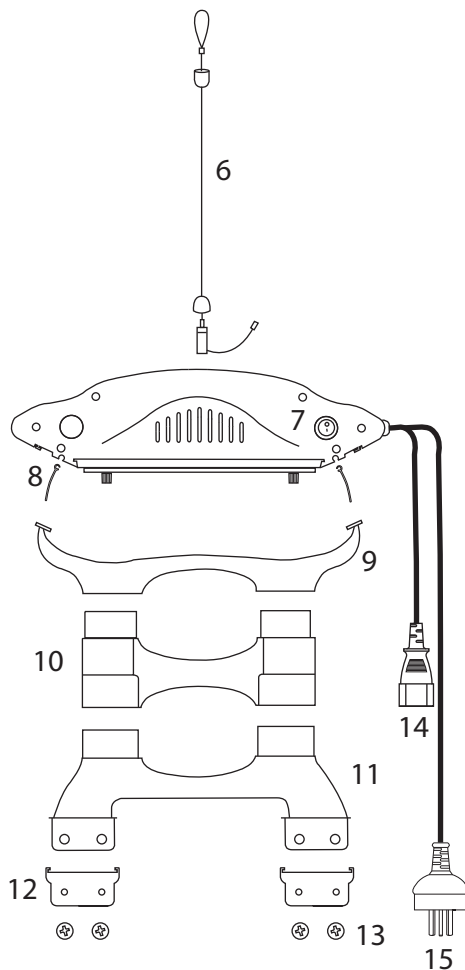


1. Metal Halide Bulb
2. Tomb Stone
3. LED's
4. Screws
5. Glass Splash Panel
6. Suspension Cable
7. Switch for LED's
8. Visor
9. Tank Bracket (Top)
10. Extension
11. Tank Bracket (Bottom)
12. Glass Protector
13. Mounting Screws
14. Female Plug – To Remote Ballast
15. Plug for LED's

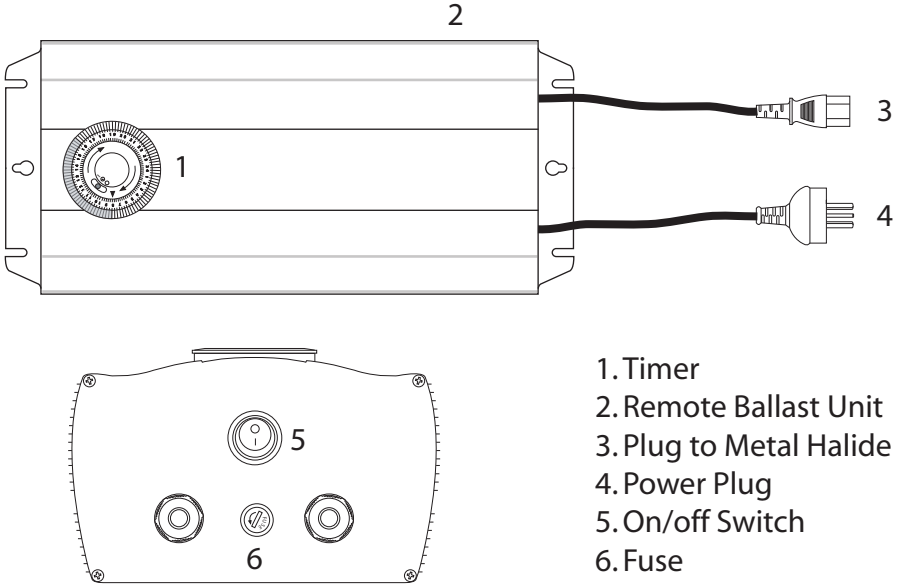
This product is shipped to you in a factory sealed carton. Should the product malfunction in any way or if the unit is damaged and requires replacement, contact the retailer where the product was purchased for inspection.

The plug supplied with this product is a sealed plug and we do not recommend removing or changing it.

If the external flexible cable or cord of this luminaire is damaged, it must be replaced by the manufacturer, its service agent or similarly qualified persons in order to avoid a possible hazard.

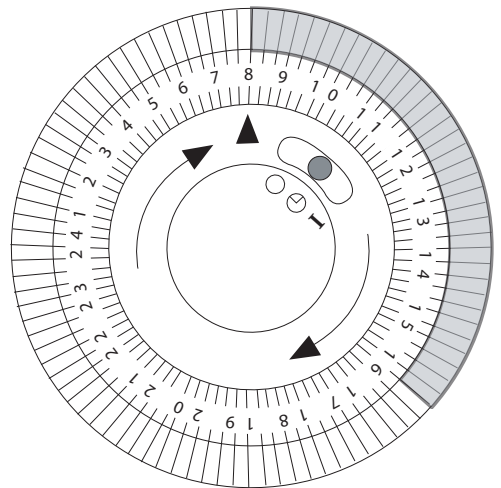


Know Your Light Continued.....



Setting the Timer

1. Move the red switch on the timer to “light on timer off” position.
2. The timer is set in 24hr time. Set the time by turning the blue dial till the desired hour lines up with the indication arrow.
3. Lift the blue tab at the hour you wish the light to turn on and the hour you wish the light to turn off.
4. Lift all tabs in between. For example if you wish the light to turn on at 8:00am in the morning and turn off at 4:00pm, lift all tabs between 8 and 16 inclusive.
5. Plug the main power supply cord into the receptacle and turn “on”.
6. Move the switch to the “timer on” position and ensure the switch on the remote ballast is in the “on” position. The switch is located on the side panel of the remote ballast unit above the fuse.

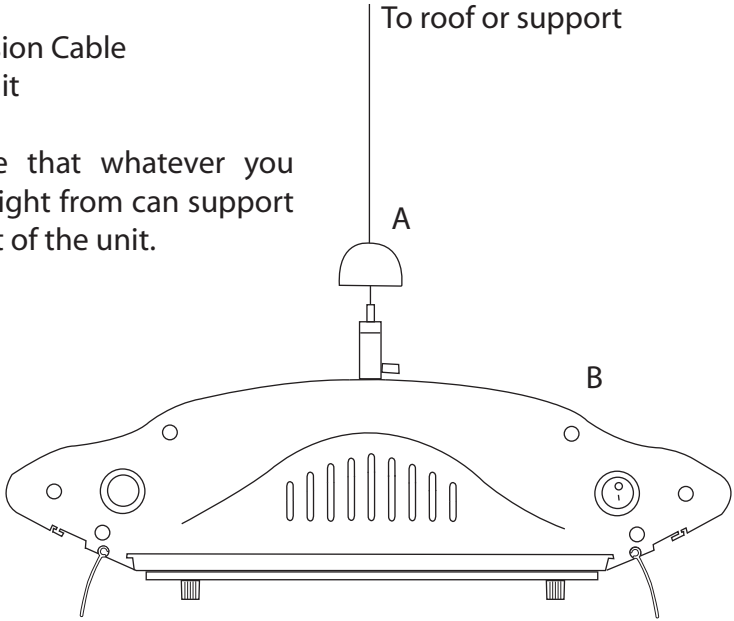


- Lights off / Timer on
- ⌚ Timer on
- I Lights on / Timer off
- ▲ Indication Arrow

Installation

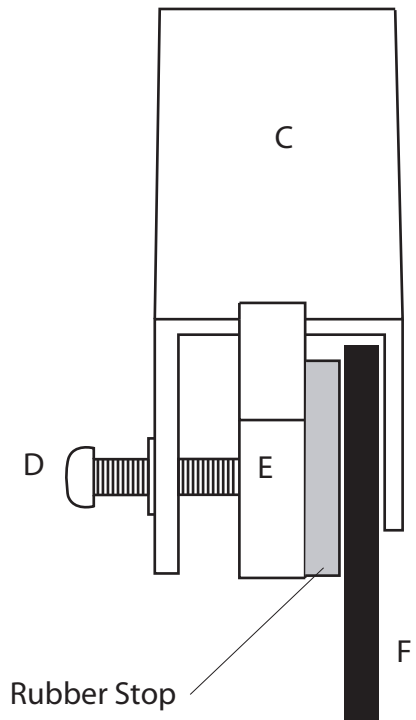
- A. Suspension Cable
- B. Light Unit

Make sure that whatever you hang the light from can support the weight of the unit.



- C. Tank Bracket (Bottom)
- D. Mounting Screws
- E. Glass Protector
- F. Aquarium Glass

Place the glass protectors in between the screws and aquarium glass, with the rubber turned towards the glass. Screw in hand tight only.



Installation

WARNING: Ensure the remote ballast unit is mounted out of reach of children and house dwelling animals as the unit will get hot during operation.

The remote ballast unit should be mounted either on the inside of a cabinet or on the back of the cabinet. Avoid putting any other equipment near the unit as it will get hot. **DO NOT** mount the unit in a small confined area.

Either sit the remote ballast on a flat shelf or insert a screw into a solid mount, and hang the unit from the screw.

Metal Halide lighting needs to be installed a minimum of 15-20cm, from the top of the aquarium lid. There are three ways to install the light unit.

1. Use the tank brackets supplied.

Note: Each light comes with two visors to cut down the glare. They slide in to place on either side of the light. Before inserting the tank brackets insert the visors into the channels provided.

The top of the tank bracket comes off allowing for the extensions to be inserted (up to 2 on each side). On the underside of the metal halide at either end are 2 screws located in the bracket channels. These need to be removed to slide the bracket into place. The screws can then be reinserted to make sure the light does not slide off the brackets. Place the top of the bracket back onto the bottom (or the extension pieces if they were used).

The two tank brackets go on both ends of the aquarium. The screws should be situated on the outside of the glass. Place the glass protectors in between the screws and the tank, with the rubber turned towards the glass. Screw in hand tight only.

Note: The light unit must be longer, or of equal length to the aquarium for this system to work.

2. Use the two suspension cables. Take the clear plugs off the top of the unit. Use the threaded parts to screw into the top of the light.

At the other end the wire is the fastener for the roof or support. To adjust height simply pull the wire at the halide end, it will automatically stop from going back. To allow the wire to go back, push the button on the top of the threaded part and the wire will slide back out.

Note: Make sure that whatever you hang the light from can support the weight of the unit.

3. Have a crown custom built for your aquarium with support brackets in it to rest the unit on. The switches for the lighting are separate for the LED and Metal Halide. The switch for The LED's are located on the ends of the light unit, So allowance must be made for these switches when the crown is being built. There are also two or three power cables which supply power to the LED's and Metal Halide bulbs separately. This enables timer switching to be used on the LED's, as the Metal Halide timers are built into the remote ballast unit.

Maintenance

Changing the Bulbs Refer to page 3 for part identification

Every 12 months the Metal Halides bulbs need to be changed. In order to do this follow these instructions. If you have any doubts about performing this procedure, please take the light unit to your specialist aquarium retailer.

1. Turn the light unit off at the power source, allow it time to cool.
2. Remove the light unit from its fixtures.
3. Turn the unit upside down so you can see the bulbs.
4. Take out the 4 screws which hold the glass splash panel in place and remove the glass panel. Place it somewhere safe, where it will not be trod on.
5. Before you inset the new Metal Halide bulb or remove the old ones, it is important to remember that these bulbs are delicate and require special care. **DO NOT** touch the bulbs with your hands or fingers. Remove the old bulbs using a clean rag, soft tissues or put on a set of cotton gloves.
6. Unscrew the bulb. Slide it to away from the tomb stone, lift the threaded end out first.

7. Place the old bulb somewhere safe where it will not be stepped on or capable of rolling off and smashing.

8. Remove the new bulb from its packaging and insert it into the tomb stone as soon as it is removed from the packet.

9. Place the old bulbs in the used pack from the new one and dispose of sensibly or mark as used and store them somewhere safe where children can not touch them.

10. If you do touch the bulb with your finger use a good quality glass cleaner with a clean rag, free of grease and oil and clean the bulb. Ensure all moisture is removed from the bulb once clean.

11. Reassemble the unit in reverse order. Ensure the 4 rubber mounts are lined up correctly and in position prior to replacing the glass cover and screws.

12. Test the light unit prior to reinstalling it. Let it run for approximately 5 minutes before switching it off. Let the unit cool before putting it back into position.

NOTE: If the bulb has just been switched "off", it needs to be left for 5 minutes before being switched back on.

LED'S DO NOT WORK

1. Ensure the plug is inserted into the wall socket correctly.

2. Ensure the switch is in the "on" position.

METAL HALIDE BULB DOES NOT WORK

1. Check that it is plugged into the power supply and that it is in the "on" position.

2. Check timer is set correctly. Refer to page 4

3. If the bulb has just been switched off, it needs to be left for 5 minutes before being switched back on.

4. Check the plug between the remote ballast and light unit are connected correctly.

5. Ensure the switch on the remote ballast is in the "on" position.

6. Turn all power off to the light unit at the wall socket remove the fuse in the remote ballast unit, check and replace if needed.

7. Check the bulbs have not blown.

Specifications

220 - 240V~50HZ

Model	Bulbs	LED'S	Length	Tank Size (max)	Timers
HaliGlo 600 LED	1 x 250W	2	60cm	90 x 76 x 76cm	1
HaliGlo 1000 LED	2 x 250W	2	100cm	120 x 76 x 76cm	2
HaliGlo 1200 LED	2 x 250W	3	120cm	150 x 76 x 76cm	2
HaliGlo 1500 LED	3 x 250W	4	150cm	180 x 76 x 76cm	2

Precision Manufactured in the P.R.C.
Designed in Australia by Aqua One
Distributed in Australia by:
Kong's (Aust.) Pty. Limited
48 Williamson Rd, Ingleburn
2565 NSW Australia

Distributed in New Zealand by:
Kong's (NZ) Limited
52 Glenlyon Avenue. Greerton
Tauranga New Zealand

Distributed in Hong Kong by:
Kong's Aquarium Supplies Co., Ltd
No 31, 3/F Thriving Industrial Centre
26-38 Sha Tsui Road, Tsuen Wan
Hong Kong

Distributed in the UK by:
Kong's (UK) Limited,
C/O Aqua Pacific UK Ltd.
PO Box 268
Romsey Hampshire
SO51 0WW
United Kingdom



220 - 240V ~ 50HZ



www.aquaone.com.au

Aqua One is a registered trademark.

Aqua One - Guarantee 2 + 1 Year

The additional 1 Year Extended Guarantee applies when you **REGISTER** with Aqua One. See enclosed for details.

ATTENTION!

PLEASE RETAIN YOUR PROOF OF PURCHASE AND GUARANTEE

Congratulations on your purchase of a quality Aqua One product. This product will last you many years under normal usage.

About this Guarantee

The Manufacturer or Distributor, of Aqua One goods, is collectively known herein as "Aqua One". Please refer to contact details for Aqua One below or on the applicable Aqua One website. Any product that is covered by its own Guarantee (as enclosed with the product) is subject to the conditions of that Guarantee.

The benefits given to the purchaser, under Guarantee, are in addition to all other statutory rights and remedies which the purchaser has in respect of goods under legislation in the applicable country of purchase. This Guarantee shall not affect any such rights and should be read subject to such legislation.

1.0. Terms and Conditions of Guarantee.

- 1.1. Aqua One warrants to the purchaser, for 2 Years from date of original purchase, to repair or replace goods where fault is found due to defective materials or faulty workmanship and where goods do not operate in accordance with the instructions.
- 1.2. All claims for repair or replacement must be made at place of purchase.
- 1.3. The original and dated Proof of Purchase (receipt) must be supplied with all goods claims. Please also provide this Guarantee where possible.
- 1.4. All goods subject to claim under Guarantee should be prepared for transportation in the original packaging or other comparable packaging which offers the same degree of protection.
- 1.5. Where goods are repaired or replaced under Guarantee, these goods are Guaranteed for the remainder of either the original Guarantee or Extended Guarantee period.
- 1.6. Where claims on inspection reveal goods are in normal working order, Aqua One will request reimbursement of all reasonable costs incurred.

2.0. Other Terms and Conditions – Extended Guarantee

- 2.1. The Extended Guarantee period is for an additional 1 Year and commences on expiration of the standard guarantee period.
- 2.2. Application for Extended Guarantee is FREE of any registration cost to the purchaser on completion of the Extended Guarantee questionnaire which may be found with the Aqua One goods purchased or on the applicable Aqua One website. (See below)
- 2.3. Upon receipt and acceptance of the questionnaire, Aqua One will forward a Certificate of Extended Guarantee to the purchaser.
- 2.4. For more information on how we collect, hold, use and disclose personal information provided to us, please refer to our Privacy Statement on the Aqua One websites or write to our Privacy Officer, in your country of purchase.
- 2.5. Where Aqua One determines goods are being used in a manner contrary to the instructions, specifications or this Guarantee, Aqua One reserves the right to terminate Extended Guarantee for such goods and will provide written notice to the purchaser.

3.0. Exclusions and Limitations

Where permitted by local law, the following exclusions and limitations apply in regard to the Guarantee:

- 3.1. Goods claims where fault is due to, but not limited by a) misuse b) neglect c) abuse d) fire or flood e) normal wear and tear f) accidental breakage g) Acts of God h) mains voltage fluctuation or supply problems i) connection to any voltage other than what is stated on the rating plate j) modification or tampering to electrical cord or plug, k) vermin, insects or foreign object l) liquid spillage or submersion of goods where goods are not designed to sustain such use or duress.
- 3.2. Where inspections reveal goods are in normal working order including where noise or vibration is consistent with normal goods operation.
- 3.3. Attempted repairs or modifications by unauthorised persons, including but not limited to modifications to the electrical lead or plug.
- 3.4. Where the goods factory rating plate has been removed, altered, damaged or is rendered illegible.
- 3.5. Where goods are not installed, operated or maintained in accordance with Aqua One's goods instructions, specifications or this Guarantee.
- 3.6. Replacement or repair of worn consumables¹ or replacement of lost goods, parts or components.
- 3.7. Costs associated with goods transportation, removal, installation, postage or cost of insurance.
- 3.8. Any damage incurred whilst installing, transporting or moving the goods.
- 3.9. Subject to certain local statutory rights and obligations to the contrary, and this guarantee shall not affect those rights or obligations, where, to the full extent permitted by law:

1. all express and implied warranties and conditions under statute or general law, are expressly excluded and Aqua One, where permitted, will limit liability as follows and at Aqua One's option to: in regard to goods either a) the replacement of goods or supply of equivalent goods b) the repair of goods or the cost of replacing the goods or of acquiring equivalent goods OR in regard to services either c) the re-supply of services d) the cost to re-supply services.

2. Aqua One will not be liable for any loss or damage, including consequential loss or damage either directly or indirectly, or for any incidental expenses, of any kind, and in any way whatsoever.

(1) Consumables include items such as bulbs, lamps, globes, glass covers, plastic or any other supplied mounting, visors and screws.

Aqua One may be contacted in:

Australia
Kong's (Aust.) Pty. Limited
PO Box 863, Ingleburn
1890 NSW Australia
www.aquaone.com.au

Hong Kong
Kong's Aquarium Supplies Co., Ltd
No 31, 3/F Thriving Industrial Centre
26-38 Sha Tsui Road, Tsuen Wan
Hong Kong
www.aquaone.co.hk

New Zealand
Kong's (NZ) Limited
PO Box 15 - 183, Tauranga
3015 New Zealand
www.aquaone.co.nz

United Kingdom
Kong's (UK) Limited
C/O Aqua Pacific UK Ltd
PO Box 268
Romsey Hampshire, SO51 0WW
United Kingdom
www.aquaone.co.uk